

Historic, archived document

Do not assume content reflects current scientific knowledge, policies, or practices.

62-23

1926

LIBRARY
RECORDS
JUN 14 1926
U. S. Department of Agriculture

Kuehne & Reinhardt

111

Landscape service

Evergreens

Shrubs

Trees

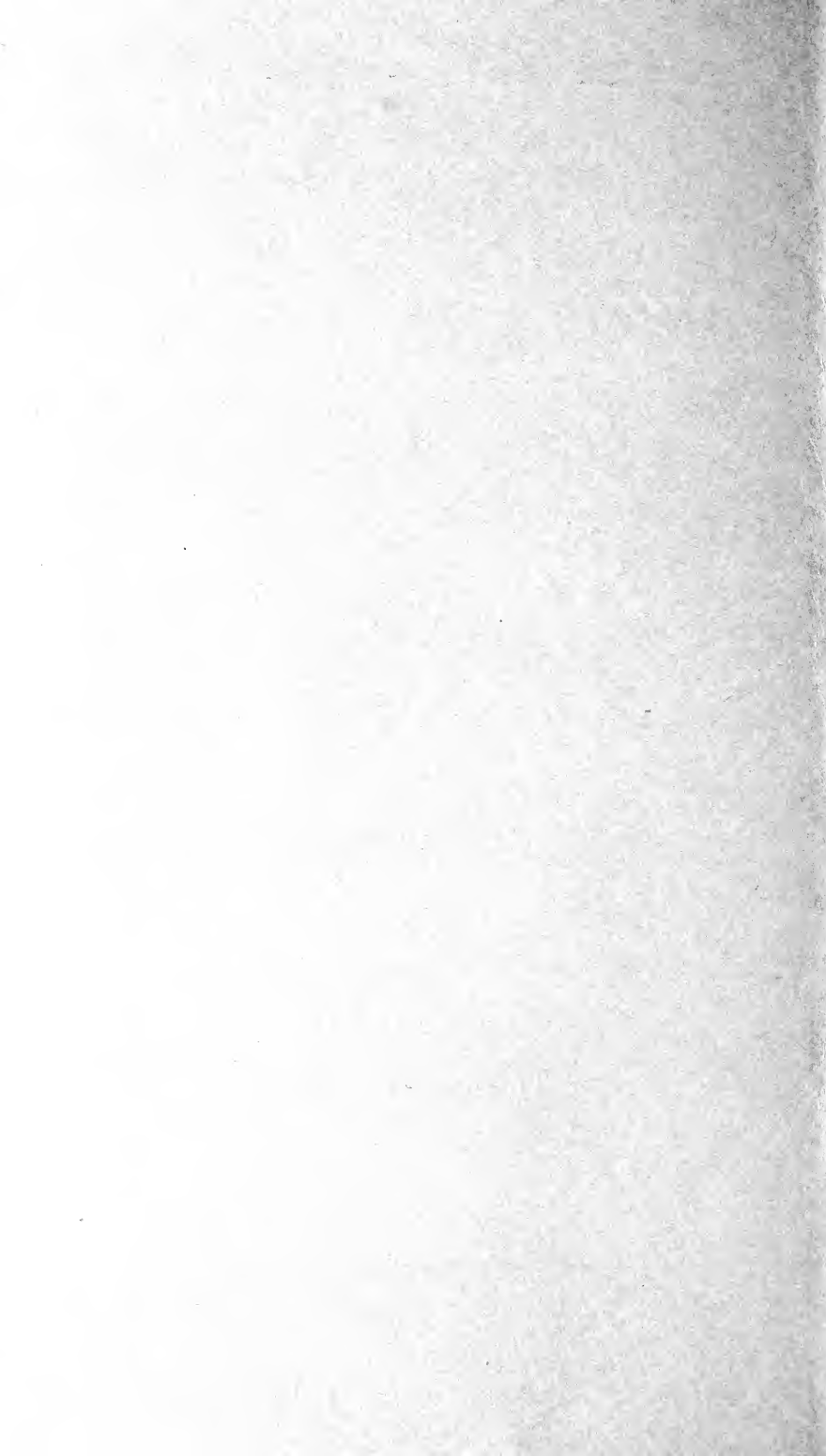
Perennials

Rock Plants

Gladiolas and Dahlias

Bulbs for forcing and outdoor planting, and many specialties not yet listed. Let us quote on your wants.

GLENVIEW, ILLINOIS



Kuehne & Reinhardt

Landscape service

Evergreens

Shrubs

Trees

Perennials

Rock Plants

Gladiolas and Dahlias

Bulbs for forcing and outdoor planting, and many specialties not yet listed. Let us quote on your wants.

GLENVIEW,

ILLINOIS

HOW TO ORDER

We hope that you will read carefully these suggestions on How to Order.

Order early; write plainly; give full directions; use order sheet enclosed for convenience.

TERMS—To save expense and work during the busy season we prefer cash with order, but for the convenience of those customers who desire it, credit can be arranged, if references are furnished.

State carefully shipping directions. Express or parcel post for perennials, shrubs or bulbs. Freight or express for trees, shrubs and evergreens.

Location—We are located on Lake Avenue, one block east of Waukegan Road in convenient distance of the north shore of Illinois suburbs of Chicago and therefore deliver as much as possible by truck and a small delivery charge is made. To distant points we ship by Milwaukee St. Paul Railroad from Glenview and Northwestern Railroad from Wilmette, Ill.

Glenview, Ill.

KUEHNE & REINHART.

ROCK PLANTS

AETHIONENA (Persian Condyuft)

GRANDIFLORA. Strong, twiggy bushes, with pink flowers. 9 inches. One of the best	10	100
Rock plants	3.00	25.00
PERYSICUM. Darker than Grandiflora.....	3.00	25.00
ALYSSUM. (Rock Madiwort)		
Saxatile Compactum, bright yellow, every Spring, June 15th.....	2.00	18.00
Wiersbrechi, canary yellow, splendid Rock and Edge Plant.....	2.00	18.00
ARABIS ALPINA (Rock Cress). Alpina, pure white flowers, produced in dense masses..	2.50	20.00
AURICULA (Swiss Primrose). Should be in every collection. Flowers covered with mealy substance which makes them look like butterfly wing	5.00	40.00

HARDY PERENNIALS

Which Live, Thrive and Flower on the North Shore

On account of the great difference in prices, we have made it our motto to furnish only strong, healthy plants in one and two year stock, field grown, true to name, where plants are grown from cuttings or divisions. Seedling plants do not always come true and therefore cannot be guaranteed in one-year stock, but two-year stock will be selected with the same care as cutting and division stock.

ROCKY GARDEN PLANTS

We will have by fall a much enlarged collection of varieties when we see the results of our trials for hardness of many varieties new to this part of the United States.

ARENARIA (Sandwort)

MONTANA. Close tuft, properly covered with small white flowers. Good for sunny position	10	100
.....	3.00	24.00
GRANDIFLORA. One of the best Rockplants. Covered with snow-white flowers.....	3.00	24.00

AQUILEGIA (Columbine)

As a cut flower, the Long-Spurred Aquilegias are the daintiest of our outdoor grown flowers. They come in blues, whites and yellows, and shades of pink and rose in strains reasonably true. They remain in bloom for a long season and are vigorous and long lived. They are not at all particular as to soil or location, hardy border or rockery. Their period of flowering covers the late Spring and early Summer months.

	10	100
COERULEA. Blue shades.....	\$2.00	\$15.00
CHRYSANTHA. Beautiful golden yellow flowers; blooms for two months.....	2.00	15.00
CHRYSANTHA ALBA. A white variety of the above	2.00	15.00
CANADENSIS (Common American Columbine). The native bright red and yellow variety, and one of the brightest.....	2.00	15.00
MRS. SCOTT ELLIOTT HYBRIDS. There is not a better mixture grown in the world than by Mrs. Scott Elliott. Wonderful colors, with very long-spurred flowers.....	2.00	18.00

ARMERIA (Sea Pink or Thrift)

Attractive dwarf plants that will succeed in any soil, forming evergreen tufts of bright green foliage. Flowers appear in dense heads, on stiff, wiry stems, from 9 to 12 inches high continuously from early Spring until late in the Fall. Rockery and border.

BEE'S RUBY (New). A wonderful free-blooming variety, bearing great quantities of rosy carmine flowers. 12 to 18 inches high.		
LAUCHEANA ROSEA. Bright rose, 3 to 6 inches	2.50	20.00
FORMOSA. 6 to 8 inches. Pink.....	2.50	20.00
ROBUSTA. 8 to 10 inches. June to October. Large, crimson flowers. Very useful for edging and cutting.....	4.00	30.00
MARITIMA (Thrift or Cushion Pink). 3 to 6 inches. May and June. Valuable for edging; flowers fine purple; foliage grasslike, evergreen	2.50	20.00
MARITIMA ALBA. 3 to 6 inches. May and June. Tufts of deep green foliage; white flowers	2.50	20.00

ASTER ALPINUS (Dwarf Alpine Aster)

GOLIATH. Indispensable for the rockery or edge of hardy borders; 6 to 10 inches high, and bears large showy, bluish purple flowers in May and June.....	3.00	25.00
ALPINUS ALBUS. Large, white flowers.....	3.00	25.00
SUB-COERULEUS. Forms a dense tuft of leaves, from which issue many leafless stems 12 inches high bearing in June and July massive bluish violet flowers 3 inches in diameter	2.00	15.00

CAMPANULA

CARPATICA (Carpathian Harebell). Grows in compact tufts, not exceeding 8 inches high; flowers clear blue. June, October. Edging for a hardy border or for the rockery	2.00	18.00
--	------	-------

	10	100
CARPATICA ALBA. A pure white.....	2.00	18.00
ELEGANS. Fine Campanula for borders and rockeries. Height 18 inches. Blooms all Summer	3.00	25.00
GLOMERATA. A favorite old-fashioned plant deep blue flowers in large, close heads. 18 inches	3.00	25.00
GRANDIS (Great Bellflower). 1½ feet. May and June. Very showy, large, saucer- shaped flowers, rich violet-blue.....	3.00	25.00
GRANDIS ALBA. A white form of the above.	3.00	25.00
ROTUNDIFOLIA (Blue Bells of Scotland or Harebells). 1 foot. June to August. Suited for crevices in the rock garden, or steep slopes, if planted to show pendent habit....	3.00	25.00

ERINUS

ALPINUS. Pretty rosettes of foliage and racemes of rosy purple flowers. Rock plant and for establishing on old walls or between steps. 4 inches. May-June.....	3.00	25.00
--	------	-------

GRASSES

FESTUCA GLAUCA (Blue Fescue Grass). 12- 15 inches. Dense tufts, narrow bluis hleaves. Desirable for rockery.....	2.00	1.00
PHALORIS ARUNDINACEA. Variegated grass, 18 inches.....	2.00	18.00

HEUCHERS

HEUCHERA (Corabells). One of the longest blooming perennials, of excellent habit, flow- er or straight, strong stem. Very attractive foliage.		
AMERICANA. 1½ to 2 feet. July. Native plant, with greenish yellow flowers. Rock garden or edging of border.....	2.50	20.00
BRIZOIDES. This new Heuchera is one of the most desirable hardy plants introduced. Same foliage and habit as Heuchera san- guinea. Blooms in May.....	3.50	30.00
SANGUINEA. 12 to 18 inches. June to Sep- tember. Flowers bright crimson; very free- flowering. Nice for cutting. Excellent for rock garden.....	3.00	20.00
NEPETA MUSSINI (Catnip). Fine for rock and border plant dwarf, compact. Free flowering; lavender blue.....	2.50	20.00

PAPAVER NUDICAULE (Iceland Poppy)

Of neat habit, forming a tuft of bright green, foliage, throughout the entire season, a profusion of slender stems 1 foot high, each graced with charming cup-shaped flowers.

	10	100
Baker's Sunbeam Mixture.....	2.00	2.00
Miniature flore pleno or Double Nudicaule....	2.00	2.00

PHLOX SUBULATA (Moss or Mountain

Pink). 4 to 6 inches.

Rosea—Rose pink 2.00 18.00

Alba—Pure white 2.00 18.00

Lilasina—Light lilac 2.00 18.00

PHLOX AEMONAE. 4-inch. Fine for rockery and carpeting ground. Flowers in spring.

Bright pink 2.00 18.00

SAPONARIA. (Soapwort). Oxymoides splen-

dido, splendid border and Rockplant. Rose

pink 2.00 18.00

SEDUM (Stonecrop)

Dwarf Varieties

America's greatest plant. For the rockery, carpet-bedding, covering of graves, etc.

AIZOON. Bright yellow flowers. 1 foot. July and August 2.00 18.00

ACRE (Golden Moss). Much used for covering graves; foliage green; flowers bright yellow 2.00 18.00

EWERSI. Rose colored flowers, with glaucous gray foliage; sub-trailing habit..... 2.00 18.00

SARMENTOSUM. Excellent dwarf variety for rockeries or border edgings..... 2.00 18.00

GLAUCUM. Excellent dwarf variety for rockeries or border edgings..... 2.00 18.00

SEXANGULARE. Very dark green foliage; yellow flowers 2.00 18.00

STOLONIFERA. One of the most desirable; flat, succulent leaves; flowers purplish pink; July and August; 6 inches..... 2.00 18.00

SPURIUM COCCINEUM. A beautiful rosy crimson-flowered form; July and August; 6 inches 2.00 18.00

STAHLI. Very fine rock plant..... 2.00 18.00

STATICE (Great Sea Lavender)

LATIFOLIA. A valuable plant, either for the border or rockery. 1½ feet high and 2 feet across, of purplish blue, minute flowers during July and August. These, if cut and dried, last in perfect condition for months.. 2.00 18.00

TUNICA (Coat Flower)

	10	100
SAXIFRAGA. A pretty tufted plant with light pink flowers, produced all Summer. Useful either for the rockery or the border.....	2.00	18.00
VALERIANA (Valerian; Garden Heliotrope)		
COCCINEA. Showy heads of old rose flowers. June to October. 2 feet.....	2.00	18.00
OFFICINALIS (Hardy Garden Heliotrope). Produces showy heads of rose-tinted white flowers during June and July, with delicious, strong heliotrope odor. 3 to 4 feet.....	2.50	22.00
VIOLA CORNUTA—Continued		
ADMIRATION. Light blue.....	1.75	15.00
GOLDEN YELLOW	1.75	15.00
PURPLE QUEEN	1.75	15.00
ROSE QUEEN	1.75	15.00
TURINGIA. Rich blue flowers with white spots	1.75	15.00
WHITE PERFECTION	1.75	15.00
MIXED. Many shades and marking....s.....	1.75	15.00

HARDY PERENNIALS

*ACHILLEA (Yarrow)

	10	100
*PTARMICA, fl. pl., The Pearl (Sneezewort.) This charming white flower is very hardy, lasting for years without winter-killing and withstanding drought admirably. It is a beautiful plant in the border and is especially good for cutting. Clusters of button-like white flowers on a good cutting stem. 2 feet. June to August.....	2.00	15.00
*MILLEFOLIUM ROSEUM (Rosy Milfoil). Rose pink flowers, in dense heads. 18 inches high, flowers most of the summer.....	2.00	15.00

ACHILLEA

FILIPENDULINA. Fern-leaved Yarrow; Mil- foil. A showy variety with dense heads of yellow flowers. 3 ft. June, July.....	2.50	18.00
ACONITUM AUTUMNALE (Monkshood). Showy blue flowers. 3 to 4 ft. August, September.		
FISCHERI. Strong spikes of large, dark blue flowers. 2 to 3 feet. September, October..	3.00	22.00
WILSONII. A tall variety from China, with violet-blue flowers. 5 to 6 ft. September..	12.00	90.00

ALYSSUM (Goldentuft)

SAXATILE COMPACTUM (Goldentuft). Golden yellow, flowers in April and early May. 8-12 inches. Good for rockery or front of border. One of the earliest spring flower- ing perennials	2.00	18.00
AJUGA REPTANS. (Bugle Weed). Splen- did ground cover for shady places, clumps \$20.00 per 100; 10 \$2.50 divisions for fall de- livery, \$120.00 per 1,000; \$15.00 per 100.		
LYSIMACHIA NUMULARIA. Splendid cover for shady places; likes moist ground. Beau- tiful yellow flowers, \$15.00 per 100; \$2.00 per 10.		

ANCHUSA (Bugloss)

ITALICA, DROPMORE VARIETY. Rich gen- tian blue. This flowers in June before the Delphiniums and when other blue flowers are scarce. 3-5 feet high.....	2.00	15.00
ANEMONE (Windflower). Japanese Anemones are among the best Autumn flowering plants. 2 to 3 ft. September, October.		

	10	100
JAPONICA ALBA. Single, pure white.....	3.50	30.00
ELEGANTISSIMA. Semi-double, satin-pink ..	3.50	30.00
RUBRA. Single, reddish rose.....	3.50	30.00
ANTHEMIS MONTANA (Marguerite). One of the most satisfactory perennials; flowers creamy white. 2 ft. June, October.....	2.00	18.00
TINCTORIA KELWAYII (Golden Marguerite). This is a hardy yellow marguerite or dairy that is very showy in the border and good for cut flowers. Very hardy and does well in poor soil. 15-24 inches. Flowers most of the summer if not allowed to seed	1.75	15.00

AQUILEGIA (Columbine)

*LONG SPURRED HYBRIDS (Mrs. Scott Elliott's Strain). Beautiful flowers in many shades and colors, all with long, graceful spurs on the flowers. These are the most admired of the Columbines. These and other Columbines are suitable for cutting, as well as rockery or border. They are often in flower by Memorial Day with us. 18-24 inches. May and June.....	2.00	18.00
*CHRYSANTHA. Bright yellow, long spurred flowers. The latest to flower and the tallest growing of the Columbines. 30-36 inches. June and scattering flowers all summer....	2.00	15.00
CANADENSIS. Our native red and yellow Columbine. Strong growing and beautiful. The plants we send are not collected but are carefully grown in the nursery.....	2.00	15.00
NIVEA GRANDIFLORA (White Columbine). A strong growing white variety, not long spurred	2.00	15.00
ARABIS ALPINA (Rock Cress). Adapted for rock gardens; pure white. 5 in. April, May	2.50	18.00
ARTEMISIA LACTIFLORA. Large, branching panicles of sweetly scented, creamy white flowers, 3 to 4 ft. August, September.	2.50	20.00
ASCLEPIAS TUBEROSA (Butterfly Weed). Orange-scarlet. 2 ft. July, August.....	2.50	22.00

ASTER (Michlaemas Daisy)

CLIMAX. Large, soft mauve flowers with golden center, 5 to 6 ft. September, October	2.00	15.00
MAGGIE PERRY. Large flowers of soft, rosy mauve, 4 ft. September, October.....	3.00	25.00
PERRY PINK. Glistening, reddish-pink flowers. September, October.....	3.00	25.00

	10	100
PERRY'S WHITE. Pure white, free flowering. 5 ft. September, October.....	3.00	25.00
ST. EGWIN. Pink, compact habit. 3 ft. Sep- tember	2.50	22.00
TATARICUS. Tall straight growth, large violet flowers. 6 ft. October.....	3.00	25.00
WHITE CLIMAX. Pure white, large flowers. 5 to 6 ft. September, October.....	2.00	15.00
BEAUTY OF COLWALL. Upright, compact, free branching, covered with large semi- double flowers of ageratum blue during September. 4 ft.....	2.50	22.00
*FELTHAM BLUE. Large clear blue flowers. Excellent for florist use. 4 ft. Sept.....	2.50	22.00

ASTILBE

(Arendsi and Japonica Hybrids)

Hybrid varieties of very vigorous growth, producing many-branched, feathered heads of flowers in June and July. They prefer a half-shady, moist position in any ordinary garden soil. Field grown clumps.

	Each	10
AMERICA. Deep pink; excellent forcing vari- ety	\$0.50	\$ 4.50
BRUNHILDE. Creamy white, shaded lilac....	.75	7.00
CERES. Light, rosy pink, with silvery hue....	.75	7.00
DAVIDI. Large plumes of violet flowers; 5 to 6 feet75	7.00
DEUTSCHLAND. Purple pink.....	1.00	9.00
EMDEN. Rich magenta	1.00	9.00
GRANDIS ROSEA MAXIMA. A splendid pink sort growing 4 feet high.....	.75	7.00
GLADSTONE. 18 inches. June-July. A fine variety. Immense trusses of flowers are as white as snow, borne on erect, strong stocks	.50	4.50
GUNTHER. Rosy pink	1.25	10.00
MARGUERITE VAN RECHTEREN. Grows about 5 feet high. The flower stem has a length of over 3 feet. The very fine fringed flowers are bright red tinged with dark lilac	.75	7.00
META IMMINK. Dense plumes of bright pink. Very fine.....	.75	7.00
MOWE. Bright pink.....	1.00	9.00
PROF. WEILEN. Loose panicles of small, white flowers; exceedingly pretty.....	2.00	18.00
RHEINLAND. A lovely blend of rich crimson and salmon.....	1.00	9.00
RUBENS. Rosy red; new and good; fine for forcing60	5.50
SALLAND. Grows over 6 feet high with flow- ers of a distinct red color.....	.75	7.00
QUEEN ALEXANDRA. Light pink; good for forcing50	4.50
VESTA. New, tall, lilac-rose spikes; beautiful garden variety	1.50	12.00

VAN DEN BOSCH. Good border plant.....	1.50	12.00
AUBRIETIA DELTOIDES. Fine for rockeries; lark violet. 6 in. April and May....	2.00	18.00
BAPTISIA AUSTRALIS (False Indigo). Has racemes of lupine-like flowers, dark blue in color. 3 to 4 ft. May-July.....	2.50	22.00
BOCCONIA CORDATA (Plume Poppy). Creamy white flowers. 6 to 8 ft. July, August	2.00	18.00
BOLTONIA ASTERIOIDES. Has pure white, Asterlike flowers. 5 to 6 ft. August, September	2.00	18.00
LATISQUAMA. Similar to the preceding, with pinkish lavender flowers. 5 to 6 ft. August, September	2.00	18.00
-NANA. A dwarf form. 3 ft. Aug.-Sept....	2.00	18.00
CAMPANULA (Bellflower or Harebell)		
Largest and most beautiful family of border plants in cultivation. Very free flowering and easy growing.		
*GROSSEKI. A fine deep blue variety, growing 3 feet tall, blooming all summer. Excellent variety for cut flowers.....	2.00	18.00
MEDIUM. The old-fashioned and well known Canterbury Bell. Invaluable for making a striking effect in the border during June. 2 ft. Can be supplied in dark blue, light blue, rose and white.....	1.75	15.00
*PERSICIFOLIA (Peach Bell). Large blue flower, growing 2 feet tall. June-July. Good cut flower	2.00	18.00
*PERSICIFOLIA ALBA. A white variety of the above	2.00	18.00
PYRAMIDALIS (Chimney Bellflower). Blue, 4 ft.	2.00	18.00
PYRAMIDALIS ALBA. White variety of the above	2.00	18.00
LATIFOLIA MACRANTHA (Royal Bellflower)	2.00	18.00
CARPATICA (Harebell). Flowers large, erect, light blue. 5 to 7 in. July, August.....	2.00	18.00
-ALBA. A white form of the above.....	2.00	18.00
CASSIA MARILANDICA (American Sanna)..	2.00	15.00
CENTAUREA (Knapweed). Vigorous-growing, free flowering plant of easy culture; excellent for cutting.....	2.00	15.00
*MONTANA. Large violet blue flower, resembling the Cornflower. 2 ft. July-Sept....	2.00	15.00
CERASTUM (Mouse Ear or Chickweed)		
TOMENTOSUM. A splendid trailing plant for the rock-garden, old walls or carpeting. Has downy foliage and snow white flowers in spring	2.00	15.00

CHRYSANTHEMUM MAXIMUM (Shasta Daisy)

The improved varieties of Marguerite, all allied to the Shasta Daisy, that adorns our fields in the Spring, are among the most useful of our garden flowers. Not only have these flowers been greatly improved in size and form, but there are now early and late blooming varieties which give a succession of long-stemmed flowers so valuable for vase decoration during four months of the year.

FOR MAY FLOWERING

	10	100
LEUCANTHEMUM FLORE PLENO (Double White Shasta Daisy). Flowers double pure white of medium size, excellent for cutting; each plant produces from 30 to 50 flowers; perfectly hardy without any protection. Our latest and best addition to the Shasta Daisies.	\$2.00	\$18.00
GLORY OF WAYSIDE. Abundant flowers and blooms early in May; excellent.....	2.00	18.00

FOR JULY FLOWERING, ONWARD

SUTTON'S PERFECTION. Beautiful flowers, having long, pure-white petals with small, yellow centers. A great favorite. Height 2½ feet	2.50	22.00
MRS. C. LOWTHIAN BELL. This magnificent white Marguerite is undoubtedly the largest flowered variety of this class. Flowers frequently measure six inches across, with very broad petals of great substance. Height 2½ to 3 feet.....	4.00	35.00

FOR SUMMER AND LATE FLOWERING

ETOILE D'OR. Another of the large-flowered English type, producing the largest and best flowers of any we have.....	3.50	30.00
ARCTICUM (The Artic Daisy). Among fall-flowering perennials this is a perfect gem. It forms an attractive rosette-like clump of pretty dark green foliage, and in September multitudes of flower stems appear, terminated by pure white flowers 2 to 2½ inches in diameter. These begin to develop during the last week in September, and continue in good condition throughout October, and frequently into November.....	2.50	22.00
ULIGINOSUM (syn. Pyrethrum). Giant Daisy. Grows 3 to 4 feet high, covered with large, white, daisy-like flowers from June to September	2.50	22.00
CIMICFUGA RACEMOSA. Tall, hardy and ornamental; white racemes of flowers. 4 to 5 ft. June, July.....	2.50	20.00

CONVALLARIA

MAJALIS (Lily-of-the-Valley). Loves a partly shaded location. Everybody's favorite. Clumps of 4 to 6 "pips".....	2.50	22.00
COREOPSIS LANCEOLATA . Golden yellow; the flowers are borne on long, graceful stems, making them invaluable for cutting. 2 ft. June-October	1.75	15.00

DELPHINIUM (Larkspur)

English Delphiniums are the most beautiful hardy plants in cultivation, for they have such an immense variety of beauty and increase in size, in beauty and often in quantity, year after year. Some varieties grow 8 feet high in rich soil.

CULTURE

The culture of Delphiniums is exceedingly simple. They thrive in almost any position, and may be planted at any time of the year, provided that in Summer the plants are not too forward, and that they be well watered if the weather is dry. The soil may be a rich, friable loam, which suits them finely; but any soil, even hot and sandy, if well watered and manured, will give excellent results. A succession of flowers may be expected from Spring to early Autumn, especially if the spikes, which have done flowering early, be cut down to the ground; fresh growth will then be produced which will give blossoms. Watering in Summer will increase size of spike and flower. Top-dressing is greatly recommended on certain soils, instead of the bare surface of the ground being left exposed to the sun. Some of the neater dwarf Alpine and other hardy plants may be utilized to plant between and around Delphiniums. Coal ashes strewn over the crowns will protect the plants from slugs through the Winter and Spring.

	10	100
CHOICEST UN-NAMED HYBRIDS. The best and finest to be secured anywhere. The range of colors varies from the palest shade of blue to the deepest indigo-blue and royal-purple with many intermediary pastel tones of mauve, pink and lavender blendings. Among these new hybrids are flowers of huge size in both single and double forms.....	\$5.00	\$40.00
IMPORTED STRAIN (Blackmore and Langdon's). Grown from seed of famous named sorts. Introduced by England's foremost grower of Delphiniums.		
1-Year-Old Plants	2.00	18.00
2-Year-Old Plants	3.50	30.00
BELLADONNA. They are our best blue cut flower, are perfectly hardy and established plants, produce a number of spikes, giving three crops during the season.		
1-year. Light sky-blue	1.50	12.00
2-year. Light sky-blue. Select for forcing..	2.00	18.00
3-year. Light sky-blue. Select for forcing..	2.50	25.00
BELLAMOSA. A dark blue of the type of Belladonna with the color of the old Formosum variety, but not liable to mildew like the latter and of stronger growth.		
1-year	1.50	12.00
2-year. Select for forcing.....	2.00	18.00
3-year. Select for forcing.....	2.50	25.00
CHINENSE. A very pretty variety, with fine feathery foliage and intense gentian-blue flowers in open panicles.....	2.00	18.00
CHINESE ALBUM. A pure white form of the above	2.00	18.00
FORMOSUM. The old-fashioned dark blue Larkspur	2.00	18.00
LIZE VAN VEEN. Single; medium tall grower; brilliant pale blue. Each.....		\$0.75
LYGIA. Single; medium tall grower, very prolific bloomer; dark violet blue. Each.....		.75
LAMARTINE. Single; medium tall; finely cut foliage; has a spreading habit. Color is dark indigo blue. Each50
MRS. J. S. BRUNTON. Single; spikes attain a height from 3 to 4 feet. Color is sky blue, with a brown bee. Very attractive. Each.....		1.00
MAUVE QUEEN. Single; very tall erect grower under favorable conditions it will grow 5½ feet tall. The flower sometimes becomes fully two feet in length, and is of a uniform mauve color. Received first class certificate at the principal flower shows in Europe. New. Each.....		3.00
MOERHEIMII. Single; tall erect grower; flowers are creamy white and have branching habit which makes the plant very attractive. The bee is greenish yellow. Each		1.00

- OCTAVIUS VAN VEEN.** Single. Dwarf grower. Flowers are very compact and are light sky blue with a mauve sheen, yellow bee. Each..... 1.00
- PROFESSOR VAN STOLM.** Single. Medium tall grower; cambridge blue with a violet sheen. Each.. 1.50
- QUEEN WILHELMINA.** Single. Immense spikes. Grows 5 feet tall, very massive. Color is soft blue with a few pink petals; yellow bee. This is a very fine variety. Each 1.50

TOOLE GIANT WHITE HYBRIDS

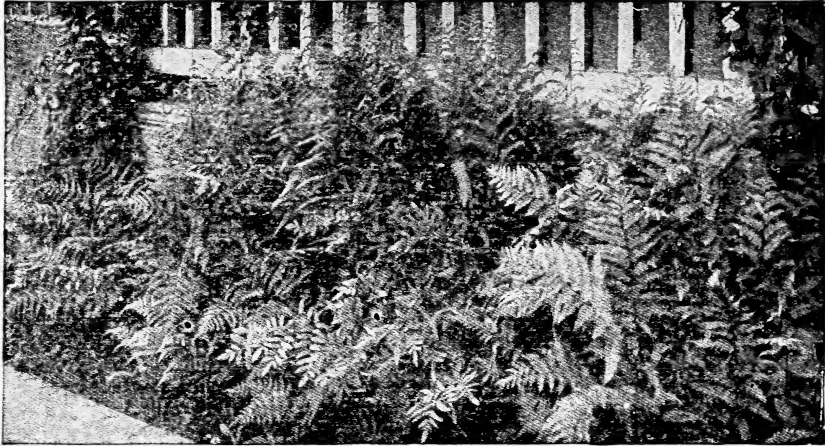
- SUMMER CLOUD.** Each, \$1.00; 3, \$2.50; 10, \$7.50; 100, \$60.00.
- THEODORA.** Single. Spreading habit Color is cobalt blue tipped purple. Medium tall. Each.....\$1.00
- ZUSTER LUGTEN.** Double. Very tall grower, 5 to 6 feet. Very dark blue, with a brownish purple center. The bee is dark brown. New. Each..... 2.50
- DIANTHUS (Hardy Pinks).** A very interesting and useful class of plants, blooming in early Spring.
- | | | |
|---|------|-------|
| | 10 | 100 |
| ALWOODII (Perpetual Flowering Pinks). A new race introduced from England. Tall branching habit. Very fragrant..... | 3.50 | 30.00 |
| — MARY. Pale rose-pink with light maroon center | 3.50 | 30.00 |
| — PHYLLIS. Delicate pale pink with light maroon center; very strongly scented..... | 3.50 | 30.00 |
| — ROBERT. A delicate shade of old rose with light maroon center; very free..... | 3.50 | 30.00 |
| The above three varieties, 35c each. | | |
| BARBATUS (Sweet William). In separate colors; red, white and rose. 2 ft..... | 2.00 | 15.00 |
| — NEWPORT PINK. A distinct variety in this favorite flower, being a salmon-rose-pink.... | 2.00 | 15.00 |

VARIOUS VARIETIES

Suitable for dry rockeries, dry walls or any other hot, dry, sunny spot. Almost all Pinks are of the easiest culture and will thrive in any well drained soil and sunny position.

- | | | |
|---|--------|---------|
| | 10 | 100 |
| DIANTHUS ARENARIUS (Sand Loving Pink). This Pink delights in a sandy soil and sun. Flowers white with carmine ring, deeply fringed and fragrant. Excellent for dry, hot places. 6 inches..... | \$2.00 | \$15.00 |
| CAESIUS GRANDIFLORUS (Cheddar Pink). It is very compact in growth and makes a cushion of glaucous leaves from which, in May, spring the sweet smelling, rose colored flowers. It varies as much as from four inches to ten inches in heights. It is easily grown and very fine for the rock garden. 6 inches | 3.00 | 25.00 |

CRUENTUS. Dense heads of flowers on long stems. Deep red. Fine border plant.....	2.00	15.00
DELTOIDES (Maiden Pink). A beautiful little plant with narrow leaves and bearing a profusion of small, crimson flowers during June and July. Easily grown on rockery.....	2.00	15.00
DELTOIDES ALBUS. A charming white form of the above variety.....	2.00	15.00
DELTOIDES "BRILLIANT." Glowing crimson-red; a most striking rock plant.....	2.00	15.00
DICENTRA FORMOSA. Rose color, with finely divided foliage. 1 ft. May-August.....	3.50	30.00
SPECTABILIS (Bleeding Heart). Long, drooping racemes of rose-crimson; useful for forcing. 1½ ft. April-June	7.50	70.00
DIGITALIS GLOXINIAEFLORE. Foxglove. White, purple rose or mixed.....	1.50	12.00
GRANDIFLORA. 2 year. Yellow Foxglove..	1.50	12.00
ECHINOPS RITRO. Steel Globe Thistle....	2.00	18.00
HUMILIS. Low Globe Thistle.....	2.00	18.00
ERIGERON SPECIOSUS GRANDIFLORE. (Oregon Fleabane.) Violet.....	2.00	18.00
COULTERI. White	2.00	18.00
ERYNGIUM AMETHYSTINUM. 2 year. Amethyst Eryngo	2.00	18.00
GIGANTEUM. Stout Eryngo	2.00	18.00
OLIVERIANUM. Steel blue.....	2.00	18.00
EUPATORIUM COELESTINUM (Mist Flower). A good hardy plant, with light blue flowers, similar to Ageratum. 2 ft. August-October	2.50	22.00
AGERATOIDES (White Snakeroot). White flowers; good for cutting. 4 to 5 ft. August-September	2.00	18.00



HARDY FERNS

Hardy Ferns can be planted in either spring or fall. Hardy Ferns are being used in quantity for massed plantings, and selections can be made to suit almost any location. Many times there are corners about the house where the sun does not strike. Such places can be beautified by the use of Hardy Ferns. There are a few varieties of hardy native Ferns which will thrive in the open sun, yet, for the most part, they will give much better results when planted in a shady location.

SOILS—Some of the larger-growing Ferns can be grown with extremely good results in ordinary garden soil in a shady location, yet, if we intend to imitate Nature, it will be necessary to furnish, for many of our Ferns, better conditions than are found in the ordinary garden. In planting Ferns it is well to prepare the soil by making it very fine, then adding, if practicable, leaf-mold so as to make the soil very light and porous. If the planter does not have at his disposal a sloping piece of ground and is anxious to have Ferns in his garden, it will be well to raise the bed 2 to 3 inches in which they are planted. This will tend to produce the drainage conditions necessary.

In planting the small rock Ferns, almost pure leaf-mold or peat should be used. This class of Ferns is, as a rule, found growing in such soils and while they can be made to struggle along and in some cases give fairly good results in ordinary garden soil, they will do much better if furnished the conditions as above described.

USES—Our Hardy Ferns, being so varied in their characteristics, can be adapted to a wide variety of purposes. All of them can be used as specimens in the Hardy Fern collection; many can be used for edging walks in a shaded rock-garden; while others are best suited for massed plantings.

HOW DEEP TO PLANT—Doubtless many amateurs are not successful in growing Ferns, due to the fact that they place them too deep in the ground. Those varieties, such as the Christmas Fern or Evergreen Wood Fern, which grow from a crown should not be planted below the surface; the crown should be left exposed to the air. In case Ferns grow from underground root-stalks, such as the Beech Fern, they should be planted just below the surface with not more than half an inch of earth to cover them. Too deep planting proves fatal, especially where a long, wet season follows the planting, which cause the crowns or buds to rot.

Aspidium Acrosticoides (Dagger fern), 10—15 inches.

Aspidium Christatum (Chrested fern, evergreen), 10—15 inches.

Aspidium Christatum (var. *Clintoniana*, evergreen), 15—25 inches.

Aspidium Goldiana (Goldies Wood fern, 25—35 inches.

Aspidium Thelypteris (Marsh Shield fern), 10—15 inches.

Asplenium Felix Faemina (Lady fern), 15—35 inches.

Dicksonia Punctilobula (Hayscented fern), 12—18 inches.

Onoclea Sensibilis (Sensitive fern), 10—35 inches.

Onoclea Strutiopteris (Ostrich Plume fern), 25—50 inches.

Osmunda Cinnamomea (Cinnamon Colored fern), 20—40 inches.

Osmunda Claytoniana (Interrupted or Flowering fern), 20—35 inches.

Osmunda Regalis (Royal fern), 20—35 inches.

Thegopteris Dryopteris, 4—6 inches.

Polypodium Vulgare (Rock fern), 5—12 inches.

The Ferns listed are \$2.00 for 10, \$15.00 for 100, except
Osmunda and *Onocleo* Ferns, \$2.50 for 10, \$20.00 for 100.

FUNKIA. Very handsome and will thrive in any position. 1½ to 2 ft. July, August.....	3.00	25.00
COERULEA. Purple flowers; large, green foliage.		
LANCIFOLIA ALBO-MARGINATA. Leaves edged with white.		
-UNDULATA VARIEGATA. It has ovate leaves, the margins deep green and center a beautiful creamy white.....	3.00	25.00
SUBCORDATA GRANDIFLORA. Large, pure white flowers and bold foliage make this a very attractive variety. 50c each.....	3.00	25.00
GAILLARDIA GRANDIFLORA (Blanket Flower). Yellow and orange-red. 1½ ft. May-November	2.00	15.00
GEUM ATROSANGUINEUM (Avens). Dark crimson. 1 to 2 ft. May-July.....	2.50	20.00
COCCINEUM, MRS. J. BRADSHAW. Double dark red flowers. ft. June-September.....	2.50	22.00
LADY STRATHEDEN. A new introduction of great merit. Rich golden yellow blossoms, counterpart of G. Mrs. Bradshaw. Fine for hardy garden	3.00	25.00

GRASSES

FESTUCA GLAUCA. A pretty dwarf grass, with tufts of fine, bluish green foliage. 1 ft.	2.00	18.00
PHALARIS ARUNDINACEA PICTA (ARUNDINACEA VARIEGATA). Variegated Ribbon Grass; Gardeners' Garters. 2 to 3 ft.	2.00	18.00
GYPSOPHILA PANICULATA (Baby's Breath). Masses of minute, pure white flowers, 2 to 3 ft. June, July.....	2.00	18.00
-FLORE-PLENO. Charming, double flowers borne on branches panicles in great profusion. July, August.....	2.00	18.00
HELENIUM AUTUMNALE SUPERBUM. A grand plant, with large, flat, lemon-yellow flowers. 4 to 5 ft. August-September.....	2.50	20.00
HOOPESII. The earliest flowering of all the Heleniums and the only one with pure orange-colored flowers. 2 to 3 ft. May, June	2.50	20.00
-RIVERTON BEAUTY. Rich lemon-yellow, with large purplish black cone. 5 ft. Aug., Sept.	2.75	25.00
-RIVERTON GEM. Yellow, changing to red. 5 ft. Aug., Sept.	2.75	25.00
HEMEROCALLIS FLAVA (Lemon Lily). Flowers lemon-yellow, sweet-scented. 3 ft. May	2.00	18.00
FULVA KWANSO. Large, double flowers of a rich bronze orange. 2 to 3 ft. June-August	2.00	18.00
THUNBERGII. Lemon-yellow, very fragrant. 3 ft. July, August.....	2.00	18.00

HOLLYHOCKS (Althea Rosea)

The Hollyhock is an old garden favorite, a plant of strong, vigorous growth and noble aspect, with elegant camellia-like flowers that form perfect rosettes of the most lovely shades of color. They require a deep, rich soil and a sunny corner. Hollyhocks planted in the Fall will bloom the following Summer.

	10	100
DOUBLE. Separate colors, red, maroon, white, yellow, pink, Newport pink, white with purple base, bright rose, dark purple, apple blossom, pale lilac.....	\$1.50	\$12.00
NEW ALLEGHENY. Immense semi-double flowers, with fringed edges.....	1.50	12.00
SINGLE. Red, white, pink and mixed. (Our Hollyhocks are free from disease and rust. Clean, strong, one-year-old stock. Two-year-old plants are never sent out, as they are not satisfactory)	1.50	12.00

HIBISCUS (Mallow)

MALLOW MARVELS—A robust type of upright habit, producing an abundance of flowers of enormous size, in all the richest shades of crimson, pink and white.

	10	100
MIXED COLORS. 2 year	\$1.00	\$18.00
MOSCHEUTOS (Swamp Rosemallow). Flowers 6 inches in diameter. Red or pink. 2 year	2.00	18.00
MOSCHEUTOS "CRIMSON EYE." Flowers of immense size; of the purest white, with a large spot of deep velvety-crimson in the center	2.00	18.00
NEW GIANT-FLOWERING MARSHMALLOW. A wonderfully improved form of our greatly admired native Marshmallow or Rosemallow. Flowers of enormous size, frequently 10 to 12 inches in diameter, have been developed. Equally at home in all positions, having the same vigor in dry and wet ground; perfectly hardy and are very floriferous, blooming from early in July until late in September. They are the most beautiful and hardy of all harbaceous plants....	3.00	25.00
HYPERICUM MOSERIANUM (Gold Flower). Beautiful golden yellow flowers, with crimson stamens. 1½ feet. June-September	4.00	35.00

IRIS GERMANICA (German or Flag Iris)

The Iris is one of the finest, if not the finest, of our hardy plants. Not particular as to soil or location, but asking only that the sun shine on it.

They are very effectively planted in groups and if used

for borders are particularly desirable in that the foliage remains fresh and upright after the blossom stalks are removed.

Plant in late August or early September preferably. Spring will do also.

The roots offered in this list are from plants transplanted a year ago and are of a size large enough to bloom next Spring. The collection is up to date and consists of the best and newest standard varieties.

GENERAL LIST OF GERMAN IRIS

Varieties marked (*) have distinctive points of real merit, and are in our opinion the best of the moderate priced varieties.

	10	100
ALCAZAR. S. light bluish violet; F. deep purple with bronze-veined throat. Striking flower	\$5.00	\$40.00
*ARCHEVEQUE. Deep purple-violet. F. deep velvety violet. 24 inches.....	3.50	25.00
BROOKSIANA. Charming flowers of neat form, self colored delicate rose-lilac, without veining. Beautiful in masses.....	2.50	18.00
CANDELABRE	2.50	18.00
CATERINA. A beautiful flower.....	5.00	40.00
CAPRICE. S. Rosy red; F. deeper rosy red. Large and handsome. 24 inches.....	2.50	18.00
*CHERUBIN. The standards are very pale lilac, the falls are pale lilac thinly veined with purple	2.00	18.00
FAIRY. White, delicately borderend and suffused pale blue. The tallest standard variety giving a white effect. 40 inches.....	2.00	15.00
HELGA. Lemon-yellow, with pearl shading. Huge flower	2.00	15.00
HER MAJESTY. Fine pink.....	2.50	20.00
INGEBORG. The only pure white intermediate in general cultivation. Strong grower and free bloomer	1.75	15.00
ISOLINE. Round standards of pale pinkish buff, strongly flushed mauve.....	5.00	40.00
JUNIATA. Mauve to manganese violet blossoms	2.00	15.00
*JEANNE D'ARC. F. white edged lilac at base	2.50	18.00
*KING OF IRIS. S. clear lemon-yellow; F. rich maroon, bordered yellow. Large flowers. 24 inches	3.50	25.00
LOHENGRIN PINK	2.50	20.00
LORELY. Light yellow, blue falls bordered cream	2.50	18.00
*LEONIDAS. Standards clear mauve; falls rosy mauve. Big, of fine form, handsome.....	2.00	15.00
*LOUTE. S. light mauve with bronze sheen; F. soft red-violet, very large flower.....	6.00	40.00
MADAME CHEREAU. White, elegantly frilled with a wide border of clear blue.....	2.00	15.00

MITHRAS. Yellow falls wine-red, bordered yellow	2.00	15.00
MONSIGNOR. Standards violet; falls heavily veined purple, leaving a border of the violet; late to flower.....	2.00	15.00
MIDNIGHT. A rich deep purple, the finest in this color; a fine cut flower.....	2.50	18.00
NIBELUNGEN. S. fawn and yellow; F. violet-purple on bronze. Very large flowers; strong, vigorous grower.....	2.50	18.00
*PALLIDA DALMATICA (True). A. M., R. H. S., 1916. S lavender; F clear, deep lavender A variety of this name is mentioned in Gerarde's Herbal in 1597 and it has been grown in this country more than one hundred years and is often seen in old gardens, but the true variety is still scarce. Unsurpassed in its class. 40 inches.....	2.50	22.00
QUEEN OF MAY. Pink	2.50	20.00
RHEIN NIXE (Goos & Koenemann, 1910). A. M., R. H. S. 1916. S. white; F. violet-blue with white edge. Tall and large. Very fine. Strong grower. 30 inches.....	2.50	22.00

IRIS KAEMPFERI (Japanese Iris)

The magnificent Iris Kaempferi belong to the Apogons, and a field of them in bloom is a most gorgeous sight. Seeing them for the first time, one cannot withhold an exclamation of surprise, and having once seen can never forget their striking beauty.

CULTURE—The secret of success is to keep the ground well stirred, never allowing it to bake or become hard. Any good mellow clay loam will grow Japanese Irises to perfection, if well enriched. They like plenty of moisture during the growing season, but flooding with water is not a necessity, as many suppose. Water standing over the plants for a great length of time in Winter is fatal to them.

TIME TO PLANT—Latter part of August to the beginning of October is the best time. Late plantings should be protected by a light covering of straw or leaves after the ground is permanently frozen, to prevent roots from being heaved out of ground by frost. In northern sections late planting had best be deferred until Spring.

	10	100
AZURE. Double. Immense flower, exquisitely wavy; mauve-blue with darker halo surrounding the yellow blotch at base of petals.....	\$4.50	\$40.00
DOMINATOR. Single. Rich indigo-blue with narrow white stripes and light center. One of the finest and richest colors.....	4.50	40.00
GOLD BOUND. A fine double, pure white, enriched by a creamy glow from the gold banded center	4.50	40.00
INDO. Single. Broad, wavy petals of great size, color dark rich blue, only slightly veined. The yellow central blotch is unusually bright	4.50	40.00

LA FAVORITE. Large, fine, white, freely veined blue, and a rich purple center.....	4.50	40.00
MOUNT HOOD. Double. Light blue shaded darker, bright orange center.....	4.50	40.00
ONDINE. Single. White; flowers are of immense size; very free flowering.....	4.50	40.00
PURPLE AND GOLD. Enormous double flowers ten inches across; early and free blooming. Color rich violet-purple with white petaloids, tipped violet. The conspicuous golden throat extends outward in sharp bluish white rays.....	3.50	30.00
PYRAMID. Double. Violet - purple, veined white in center of each petal.....	4.50	40.00
SHADOW. Single. Self color, reddish purple.	4.50	40.00
MIXED COLORS. Both single and double varieties. Splendid mixture.....	3.00	25.00

IRIS SIBIRICA (Siberian Iris)

Vigorous, free-flowering varieties of the easiest culture, fine for the flower border, for naturalizing and for water-side planting.

	10	100
SNOW QUEEN. An exquisite, new, hardy Iris; the flowers are of a snowy whiteness, large and well formed, produced in great abundance; foliage light and graceful. A gem for flower border or waterside. 3 ft. high..	2.50	22.00
SUPERBA. Large, violet-blue flowers; handsome foliage. Fine border plant and a grand subject for planting near water, where it blooms profusely	2.50	22.00
LATHYRUS LATIFOLIUS (Climbing Hardy Pea)	2.50	15.00
LAVENDULA VERA. Lavender.....	2.50	15.00
LIATRIS SPICATA. (Spike Gayfeather). August. Deep purple. 3 to 4 ft.....	2.50	15.00
LINUM PERENNE (Flax). Blue. All summer 18 in.	2.50	15.00
LUPINUS (Lupine). In separate colors.....	2.50	
LYCHNIS CHALCEDONICA (Maltese Cross). July to September. Vermilion. 2 to 3 ft....	2.50	15.00
L. CORONARIA (Rose Campion). June and July. Crimson: 1½ to 2 ft.....	3.50	15.00
L. VISCARIA, VAR SPLENDENS. June and July. Pink. 15 in.....	3.50	15.00
MONARDA DYDIMA (Oswego Beebalm). July and August. Scarlet. 2½ ft.....	2.50	15.00
MYOSOTIS SCORPIOIDES (Forget-me-not). May and June. Light blue. Spreading....	2.50	15.00

OENOTHERA MISSOURIENSIS (Ozark Sun-drops). June and July. Yellow. 1 ft.....	2.50	
PACHYSANDRA TERMINALIS (Japanese Spurge). Evergreen. May and June. White. Field grown, \$90.00 per 1,000.....	1.50	12.00
PAPAVER BRACTATUM . May and June....	2.50	20.00
P. ORIENTALIS (Poppy). From pots.....	5.00	25.00
P. ORIENTALIS (Miss Perry). Salmon rose.	3.50	20.00
P. NUDICAULE (Iceland Poppy).....	2.50	15.00
PENTSTEMON BARBATUS (Beard-tongue). July. Scarlet. 2 to 3 ft.....	2.50	15.00
P. TORREYI June to August Scarlet 3 to 4 ft.	2.50	18.00

PEONIES

White

	Each	Per 10
CANARI . Free bloomer, fragrant. (M. S.)....	.85	8.00
DUKE OF WELLINGTON . Strong grower. (E.)85	8.00
FESTIVE MAXIMA . Bert White. (M. S.)....	1.10	10.00
MARIE LEMOINE . Best late white.....	1.10	10.00
MONSIEUR DUPONT . Very beautiful (L.)	1.50	14.00
QUEEN VICTORIA . Free bloomer. (E.)....	.85	10.00

Light Pink

DR. BRELLONEAU . Fine (M. S.).....	.85	8.00
EDULIS SUPERBA . Fine. (M. S.).....	.85	8.00
EUGENE VERDIER . Extra fine. (L.).....	1.10	10.00
MADAME BONLANGER . Very full flower (L.)	1.50	14.00
MAD. CALOT . Very early. (E.).....	1.00	2.00
MONSIEUR JULES ELIE . Ideal pink. (M. S.)	1.50	14.00

Rose and Dark Pink

ALBERT CROUSSE . Good robust grower. (L.)	2.50	22.50
CARNEA SUPERBA . Fine. (E.).....	1.00	9.00
CHARLES LEVEGNE . Extra good, salmon, rose. (M. S.)	1.00	9.00
FRAGRAMS . Good rose pink. (M. S.).....	.80	7.00
MAD. FOREL . One of the best, rose pink. (L.)	1.10	10.00

Creamy Yellow

DUCHESS DE NEMOURS . Sulphure white, good. (M. S.).....	1.10	10.00
COURONNE D' OR . One of the best late....	1.10	10.00
SOLFATARE . Excellent bloomer. (E.).....	.85	8.00

Red

AUGUSTINE D' FLOUR . Fine. (M. S.)....	1.10	10.00
FELIX CROUSSE . Best of its color (L.)....	1.10	10.00
OFFICINALIS RUBRA , fl pl. Good. (E.)....	.85	8.00
PRESIDENT GARFIELD . Good bloomer. (M. S.)85	8.00

Single (Japanese)

FLASHLIGHT. Light Tyrian rose, very good	2.50	23.00
LA ROSIERE. White, golden streamer, fine (M. S.)	1.50	14.00
NISHKI-NOSHOTONE. Blush pink	4.00	38.00
SOME-GANOKEE. Rosy crimson, golden streamer	7.50
TATSU GASHIRO. Rosy red, rosy streamer, extra fine	7.50
E., Early; M. S., Midseason; L., Late.		

PHLOX**PHLOX DECUSSATA (Hardy Phlox)**

Perennial Phloxes succeed in almost any soil enriched with manure in Spring, and in hot weather an occasional soaking of water. If the first spikes of bloom are removed as soon as over, they will produce a second supply of flowers, continuing the display until late in Autumn. These later blooms are often finer than the first.

(We offer nothing but strong, 2-year-old plants.)

(*These for Fall Delivery, 1926.)

	10	100
ATHIS. Deep, clear salmon. Very fine	\$2.50	\$20.00
*AFRICA. Ruby-crimson, with darker center	7.50	60.00
ANTONIN MERCIÉ. Clear lilac, with white eye. Extra large	2.00	18.00
BEACON. Brilliant cherry-red	2.00	18.00
B. COMTE. Rich satiny amaranth	2.00	18.00
*CLARA BENZ. Brilliant rosy carmine, with white eye and violet halo; medium tall	7.50	60.00
CREPUSCLE. White with delicate mauve suffusion and rosy purple eye	2.00	15.00
CHAMPS ELYSÉE. Fine, rich crimson	2.00	15.00
COMMANDER. Beautiful; new; crimson red with darker eye. The most striking of Phloxes	5.00	45.00
*EVELYN. Rich salmon-rose; flowers large and of perfect form. 3 feet	5.00	45.00
*GRAF ZEPPELIN. White with red band; better than Europa	6.00	55.00
ECLAIREUR. Bright carmine with light halo. Large flower	2.00	15.00
EIFFEL TOWER. Pink with deep pink eye. Very tall grower	5.00	40.00
ELIZABETH CAMPBELL. Bright salmon-pink, with lighter shadings and dark red eye; one of the handsomest and most attractive	2.50	22.00
*ETHEL PRITCHARD. Grand light lilac	6.00	55.00
EUROPA. A new variety, white with large crimson-carmine eye. Very large flower and truss	2.00	18.00
FUERBRAND. Bright vermilion-scarlet. New variety	5.00	45.00
GEFION. Tender peach-blossom pink, with bright rose eye, creating a soft mauve effect.		

Flower and truss very large on erect, compact stems	2.00	18.00
* IMPERATOR. Brilliant, dark carmine-red flowers, with darker eye.....	5.00	55.00
JULES SANDEAU. Large, fine, very free flowing pure pink.....	1.80	15.00
LA VAGUE. An improvement over older varieties of similar color, with immense, conical heads, borne in great profusion. Warm mauve, with emphatic carmine eye.....	1.80	15.00
MRS. JENKINS. White; immense panicles; free bloomer	1.80	15.00
MRS. SCHOLTEN. New. Dark salmon-pink flowers in enormous pyramidal spikes....	5.00	45.00
MRS. MILLY VAN HOBOKEN. New. Soft pink, without eye. Large flowers on long erect spike	6.00	15.00
PROF. VERSCHOUW. Bright carmine, overlaid with orange-scarlet.....	2.50	22.00
PANTHEON. Clear, deep, carmine-pink with faint halo	2.50	22.00
RHEINLANDER. A beautiful salmon pink, with flowers and trusses of immense size....	2.50	22.00
R. P. STRUTHERS. Bright rosy-carmine, with claret-red eye	2.00	18.00
RIJNSTROOM. Lively rose-pink, much like Paul Neyron rose. Immense trusses of flowers	2.00	18.00
THOR. A beautiful lively shade of deep salmon-pink, suffused and overlaid with a scarlet glow; has aniline-red eye.....	1.80	15.00
* VALD JENSEN. Beautiful salmon-pink with white eye. One of the newest and best	6.00	55.00
VON LASSBURG. Splendid pure white; very large trusses; free bloomer; medium early..	1.80	15.00

Phlox Suffruticosa

An early-flowering type with flower heads quite as large as the Decussata types.

	10	100
BELLE PYRAMIDE. Same habit as Lingard, but color is rose-pink.....	\$7.50	\$65.00
MISS LINGARD. The best Phlox in cultivation. It produces immense heads of beautiful white flowers in June and blooms again in September and October. Splendid foliage and habit, and free from attacks of red spider. Better results will be had if old flowers are cut off.....	2.00	18.00
NETTIE STUART. Deep pink; same habit as Miss Lingard	7.50	65.00

Phlox Arendsi

Originated by successfully crossing the early Phlox canadensis with the showy Phlox decussata. Flowers from the latter part of May to July. 1 foot.

	10	100
LOUISE. Light lilac, with carmine eye.....	\$5.00	\$40.00
AMANDA. Lilac-mauve, lighter eye.....	5.00	40.00

Phlox Subulata (Moss or Mountain Pink)

An early Spring-flowering type with pretty mosslike, evergreen foliage, which, during the flowering season, in April and May, is hidden under the masses of bloom. An excellent plant for the rockery, the border, and invaluable for carpeting the ground or covering graves.

	10	100
ROSEA. Rose-pink. Fine for covering banks; thrives in hot, dry situations, and blooms profusely	\$1.80	\$15.00
ALBA. Pure white	1.80	15.00
LILACINA. Light lilac	1.80	15.00
VIVID. Bright fiery rose. We would say that this is the finest free-flowering dwarf plant there is	2.00	18.00

Various Phlox

AMOENA. This is one of the best varieties for carpeting the ground, the rockery or the border. It grows but 4 inches high, and in Spring is a sheet of rich bright pink flowers	1.80	15.00
DIVARICATA CANADENSIS. One of our native species, which is worthy of extensive planting, commencing to bloom early in April and continuing through May, with large, fragrant, lavender flowers on stems 10 inches high	1.80	15.00

PYRETHRUM

*ROSEUM HYBRIDUM (Persian Daisy). Very hardy and one of the choicest of the perennials. The fernlike foliage is attractive when the plants are not in bloom and the flowers ranging from pure white through shades of pink to deep crimson are beautiful on the plant or as cut flowers. They flower the last of May and through June.

*ULIGINOSUM (Giant Daisy). This is one of the most striking perennials during late summer and fall when the plants are covered with large, white flowers. 3-4 feet. Strong plants.

	10	100
PHYSOSTEGIA GRANDIFLORA. Mid-Summer. Mauve. 1½ to 2 ft.....	\$2.50	\$15.00
P. VIRGINIANA, VAR. ALBA. August. White Deep rose. 3 ft.....	2.50	15.00
P VIRGINIANA, VAR. ALBA. August. White 3 ft.	2.50	
PLATYCODON GRANDIFLORUM (Balloon Flower). July to October. Blue.....	2.50	
P. GRANDIFLORUM ALBUM. White.....	2.50	
P. MARESEI. May-June. Blue. 1 ft.....	2.50	15.00
POLYMONIUM COERULEUM (Jacobs Ladder) Blue. May and June.....	2.50	18.00

PRIMULA VULGARIS. Primrose. May and June	2.50	15.00
P. VERIS. English Cowslip.....	2.50	15.00
PRIMULA VERIS INVINCIBLE. May. Yel- low. 1 ft.....	2.50	15.00
P. POLYANTHA	2.50	15.00
RUDBECKIA. LACINIATA, GOLDEN GLOW 10 (Cone-flower). Masses of double, golden yellow flowers. 6 to 8 ft. August, September.....		\$2.50
MAXIMA. Has immense grayish-green leaves and bright yellow flowers on long stems. 4 to 6 in. across. 6 to 8 ft. June-September.....		3.00
SPECIOSA (NEWMANNII). Dark orange-yellow flowers; fine for cutting. 2 ft. June-October.....		2.00
SUBTOMENTOSA. Densely branched masses of bril- liant lemon-yellow flowers with dark purple centers. 4 to 5 ft. July-October.....		3.00
SALVIA AZUREA GRANDIFLORA. A Rocky Moun- tain species, with pretty sky-blue flowers. 3 to 4 ft. August, September		2.00
PRATENSIS. Deep blue flowers. 2 ft. June, July....		2.00
NEMOROSA (VIRGATA NEMOROSA). An effective border plant, with dark blue flowers. 2 ft. May, June		2.50
SCABIOSA CAUCASIA. Beautiful soft lilac flowers, vigorous grower. 2 to 3 ft. June-August.....		3.00
ALBA. Very rare; pure white; 2 to 3 ft.....		4.00
JAPONICA. Divided leaves, branching habit. Laven- der-blue. 3 ft. June to August.....		2.50
SEDUM ACRE (Golden Moss, Stonecrop). Flowers bright yellow. 2-3 in. May-July.....		2.00
ALBUM. Foliage green; flowers white. 2-3 in.....		2.50
SIEBOLDII. Foliage changing from blue and cream to coral-rose; flowers rose-pink. 9 in. August-Sep- tember		3.00
SPECTABLE (Stonecrop). Large heads of pink flow- ers. Fine border plant. 1½ ft. August-September..		2.50
SPIRAEA FILIPENDULA. White. 2 ft. June, July	2.50	
ULMARIA FL. PL. Double white, 2 ft. June, July..	5.00	
STATICE LATIFOLIA (Sea Lavender). Fine spread- ing panicles of lavender flowers.....		2.00
STOKESIA CYANEA (Cornflower Aster). Flowers 3 to 4 in. across, of a fine sky-blue. 2 ft. July-October	2.50	
ALBA. A white form of the above.....	2.50	
THALICTRUM AQUILEGIFOLIUM (Meadow Rue). Graceful foliage and masses of pure white flowers. 1 to 3 ft. May-July		4.00
ADIANTIFOLIUM. Leaves resemble those of the maidenhair fern; flowers yellow. 1 ft. June, July..		3.00

- DIPTEROCARPUM.** One of the handsomest *Thalictrum*s, with graceful flowers on stems 4 ft. high; rosy purple, citron-yellow anthers. August-September.. 4.00
- TRITOMA UVARIA GRANDIFLORA.** Flowers pink ocher-red and yellow, fading to salmon. 3 to 4 ft. August, September 6.00
- GRANDIS** (*T. Pfitzeri*). The freest flowering of all; orange-scarlet, shading to salmon-rose at the edge. 2 to 3 ft. August, September..... 5.00
- TROLLIUM EUROPÆUS** (*European Globe Flower*). A pretty plant, with large, lemon-colored, buttercup-like flowers, 1 to 1½ in. across, on long stems. Should be planted in moist soil. 2 ft. May, June.... 7.50
- VALERIANA OFFICINALIS** (*Hardy Garden Heliotrope*). Fragrant, light pink flowers. 3 to 5 ft. June, July 4.00
- OLYMPICUM.** Yellow flowers. Very attractive variety. 8 ft. May, June..... 4.00
- HYBRIDS** 4.00
- VERONICA** (*Speedwell*). All *Veronicas* love moist situations and are excellent for rock work..... 2.50
- INCANA.** Deep blue flowers with silvery foliage. 1 ft. July, August.....
- LONGIFOLIA SUBSESSILIS** (*Blue*). Attractive; blooms until late Fall. 2 ft. Aug., Sept..... 2.50
- SPICATA.** Spikes of blue flowers. 1½ ft. June, July.. 2.50
- †**ELEGANS (NEW).** A beautiful form of *Speedwell*, growing 1 ft. high and having spikes of rich pink flowers 2.50
- VIOLA CORNUTA G. WERNING.** This is a true *Viola cornuta*, with large blue flowers..
- VIOLA, TUFTED PANSIES.**
Admiration. Soft purple, dark blotched....
Lutea Splendens. Golden yellow.....
White Perfection. White.....
- YUCCA FILAMENTOSA** (*Adam's Needle*). Pyramidal clusters of creamy flowers. 4 to 6 ft. June, July.....

CLIMBING PLANTS AND VINES
CLEMATIS COCCINEA (TEXENSIS)

	Each	10	100
SCARLET CLEMATIS. Rapid growing, covered in Summer with coral-red flowers. Field grown No. 1.....		\$1.00	\$7.50

C. LARGE FLOWERING

Henryi, white	1.00	8.50
Jackmani, purple	1.00	8.50
Duchess of Edinburgh, white, double.....	1.00	8.50
Mme. Edouard Andre, red.....	1.00	8.50

C. PANICULATA

SWEET AUTUMN CLEMATIS. Rapid-grower, handsome foliage, absolutely covered with white fragrant flowers in late Summer. Field grown No. 1....	\$.75	\$5.00	\$40.00
--	-------	--------	---------

C. VIRGINIANA

VIRGINS BOWER. Similar to last, but more open grower. Use for banks and walls. Field Grown No. 1.....	1.00	7.50	50.00
--	------	------	-------

EUONYMUS RADICANS (EVERGREEN)

WINTERCREEPER. For buildings or ground cover; slow growing; 2-year; field grown50	3.50	25.00
--	-----	------	-------

E. RADICANS CARRIERI (Evergreen)

GLOSSY WINTERCREEPER. Large, handsome, glossy, evergreen leaf; climber for buildings and walls; 2-year; field-grown50	3.50	25.00
--	-----	------	-------

E. RADICANS VEGETUS (EVERGREEN)

BIGLEAF WINTERCREEPER. Scarlet fruited, strong growing evergreen vine. Handsome foliage. Used as ground cover. 2-year; field-grown...	.50	3.50	25.00
--	-----	------	-------

LONICERA—HONEYSUCKLE

L. Japonica, Var. Halleana

HALLS JAPANESE HONEYSUCKLE. Dark, glossy green foliage; fragrant flowers from July till Fall. One of the best as fragrant thick screen on lattice or porch. Field grown No. 1....	.50	4.00	30.00
--	-----	------	-------

VINES, CLIMBING AND TRAILING PLANTS
ACTINEDIA POLYGAMA

SILVER VINE. Field grown No. 1. Heavy....	\$1.00	\$7.50
SILVER VINE. 5-in pots. Heavy.....	\$1.00	\$7.50

AKEBIA QUINATA

FIVE LEAF VINE. Shiny foliage; clusters of small chocolate colored, fragrant flowers. Field grown No. 1..... .75 5.00

AMPELOPSIS QUINQUEFOLIA

VIRGINIA CREEPER. Rapid growing for fences, rocky slopes and banks; Fall foliage rich crimson..... .75 5.00 \$35.00

A. QUINQUEFOLIA (ENGELMANNI)

ENGELMANN CREEPER. Similar to previous sort, but will cling to walls. .75 5.00 35.00

A. TRICUSPIDATA (VEITCHI)

BOSTON IVY. Strong, clinging vine of rapid growth; good Fall color. Best for walls. Field grown No. 1..... .75 6.00 45.00

BIGNONIA GRANDIFLORA

CHINESE TRUMPETCREEPER. Large, brilliant orange red flowers. 3 to . ft.; field-grown75 5.00

B. RADICANS

TRUMPET CREEPER. Strong climber, with orange flowers in mid-Summer. 2 to 3 ft.; field-grown..... .75 5.00 35.00

CELASTRUS SCANDENS

BITTER-SWEET. Rapid growing; orange-yellow fruits. Its rank growth makes it useful on rough banks in billowy masses. 3 to 4 ft.; heavy, field-grown75 5.00 25.00

DAHLIAS NEW VARIETIES

- AL KORAN.** Decorative (Davies). Large and full blooms of fine form, each petal having a slight wave which adds to the grace of the flower. Yellow suffused with gold and amber; long and rigid stalks. Extra strong field-grown tuber.....\$3.00
- AMBASSADOR.** Hybrid Cactus (Broomall). California introduction. The color is a soft yellow buff, shaded salmon-pink, of very pleasing form, enormous size; flowers stand erect, well above the foliage, on strong stem. It overtops all others in merit. Extra strong field-grown tuber.....\$3.00
- HORTULANUS FIET.** Beautiful shrimp-pink, salmon and gold suffusion.....\$1.00
- JERSEY'S BEAUTY.** Decorative (Waite). The most distinctive and the finest Dahlia in existence; real pink. A variety of supreme merit. No other Dahlia, so far introduced, can measure up to it; perfect in form, color, stem, keeping qualities in every way. A magnificent grower making no superfluous wood. Every shoot runs away and carries a perfect flower that can be cut with a long stem. Unbeaten as a laster. Gold shadows at center, of exceedingly fine texture; has splendid substance and excellent stem. Extra strong field-grown tuber.....\$5.00
- MRS. I. DE VER WARNER.** Decorative (Marean). Soft orchid coloring seldom appearing in Dahlia family. Very large blooms and long, strong, wiry stems, a lovely, sweet color, deep mauve pink; beautifully formed. Extremely strong grower, very free bloomer, splendid for exhibition and for the garden, it is of the greatest merit. Extra strong field-grown tuber\$2.00
- JUDGE MAREAN.** Decorative (Marean). Very large flower of perfect type and of a color most difficult to describe. There is glowing Salmon Pink, Red, Iridescent Orange, Yellow and Pure Gold. It is a most profuse bloomer, flowering continuously, being at its best in August; long, straight, strong stem. This variety was awarded The Special Grand Champion Award at the American Institute Show in 1919. Extra strong field-grown tuber.....\$2.00
- CLEOPATRA.** Semi-double; brilliant red, splashed with yellow. Medium sized, but so numerous and conspicuous, a small bed of them makes a thrilling spectacle. Each\$1.00
- DOCTOR TEVIS.** (Decorative). A magnificent exhibition type, liberal and large sized. Soft salmon-rose suffused with old gold, shading to a center of golden apricot. Each.....\$1.00
- AMUN RA.** A giant flowered, uniformly perfect formed Decorative, on extra long, upright stems; a gorgeous, long keeping cut-flower. Soft melon pink,

most of upper surface a shining gold, the large bronze center bristling with a fringe of folded petals in oriental red; a rich contrasty effect. Each...\$1.00

MRS. JOHN T. SCHEEPERS. (Decorative). Immense flowers independently displayed above the foliage; canary yellow at center, graduating into a delicate suffusion with pink in the outer petals. Each\$3.00

POLAR BEAR. (Decorative). Purest white, the waxy flowers of great size and perfect form, borne very freely on good long stems; long lasting quality, either on the plant or in water. We call this the finest white Dahlia for practical cutting we have ever offered. Each\$1.00

We desire to particularly emphasize the extreme desirability of the variety

DAHLIAS

Standard Varieties of Proven Merit

“DARLENE”

listed below, it is positively one of the best kinds on the market today. Particularly adapted to basket work, etc. If you have room for but a few Dahlias, plant “Darlene.” You will not be disappointed with its wonderful bloom.

- A. D. LIVONI. Show. Soft pink, very free bloomer..\$0.40
- ANGUS MEGAR. Show. Lavender-pink50
- ARABELLA. Show. Pale lemon shading to primrose at tips with whole being daintily overlaid with pink. .25
- AURORA B. Decorative. Fine flower on slender, wiry stems, color reddish purple, with white collars of tiny petals between the layers..... 2.00
- AZALEA. Decorative. Soft, creamy yellow, outer petals tinted pink..... 1.25
- BALLET GIRL. Cactus. Orange and white variegated 2.00
- BARON SCHROEDER. Decorative. Rich growing purple35
- CALEB POWERS. Show. Shell pink..... .25
- CHALLENGE. Pompon. White and maroon..... .25
- CIGARETTE. Cactus. Color creamy white, edged orange, petals curved back..... 2.00
- CLARA BELL. Decorative. This is a rich, rosy purple35
- DARLENE. Decorative. Claimed to be most promising Dahlia and we can vouch for this. Beautiful shade of shell pink with blending of white at center 1.00
- D. M. MOORE. Colossal. Deep Victoria lake..... .60
- DIEMONT VON BYSTEIN. Peony. Bright lilac changing to light blue..... .35
- DR. KUPER. Peony. Color rich orange, strong grower35
- DR. TYRELL. Decorative. Golden bronze..... .35
- EVENTIDE. Decorative. White tipped blush..... .25
- FAIRY QUEEN. Pompon. Sulphur yellow edged pink .25
- GOLDEN GLOW. Decorative. Apricot, shading to amber 2.00

HORTULANUS FIET. Decorative. The color of this variety is a beautiful shade of salmon, blending to yellow at the center.....	1.50
INSULINDE. Decorative. Very fine, large flower on good stems, color very deep gold with bronze suffusion	1.50
JACK ROSE. Decorative. Brilliant crimson.....	.25
JEAN KERR... Decorative. White	1.20
JEAN CHAZOT. Hybrid Cactus. Color a beautiful golden bronze with a light suffusion of nasturtium red	2.00
JOHN CHURCHILL. Peony. Reddish salmon-pink..	1.00
JOSEPHINE. Century. White25
JUDGE MAREAN. Decorative. Color, beautiful combination of glowing salmon-pink, red, orange, yellow and purple-gold.....	2.00
KING OF AUTUMN. Decorative. Autumn shade....	1.25
KITTY DUNLAP.. Decorative. American Beauty shade	2.50
KRIEMHILDE. Cactus. Delicate pink, shading to white in center40
LATONA. Peony. Orange, buff-yellow.....	.80
LE GRAND MANITOU. Decorative. White, splashed and blotched deep violet-purple.....	.50
LEO XIII. .Decorative. This is a beautiful deep yellow	1.25
MADELINE. Pompon. Pale primrose, edged with rose-purple25
MADONNA. Peony. White, tinted lavender-pink....	.40
MAUDE ADAMS. Show. Color pure snowy white overlaid delicate pink. This indeed is a wonderful variety and one that no retail florist can do without. From a retail standpoint Maude Adams has first consideration. It positively is a real money maker on account of its pleasing color and blooming qualities50
MRS. F. JEFFRIES. Cactus. A rich, velvety bloom of the hybrid cactus type, free bloomer, large and massive80
MR. JOS. LUCAS. Single yellow, overlaid bronzy scarlet lightened, suffused and edged salmon-rose..	.25
MEPHISTOPHELES. Decorative. Color ruby-red with gold points at the end of Each petal. Enormous flowers on strong stems.....	1.45
MILLIE ROGERS. Decorative. Old gold to amber..	1.25
MINA BURGLE. Decorative. Scarlet.....	.50
MINNIE McCULLOUGH. Decorative. Golden yellow, tipped bronze.....	.40
MRS. JOHN BOWMAN. Colossal. The color is an exquisite shade of deep golden yellow with the reverse of the petals slightly tinged magenta.....	1.00
MRS. WARNAAR. Cactus. Cream-white, overlaid pink	
MRS. EDNA SPENCER. Cactus. Lavender-pink, suffused white	1.20
OREGON BEAUTY. Decorative. Scarlet.....	.35
PRINCESS JULIANA... Decorative. White.....	.35
PRINCESS VICTORIA. Show. Good yellow.....	.35

PINK ABUNDANCE. Cactus. Mallow pink, white shadings	1.80
QUEEN MARY. Decorative. Soft pink.....	.50
REMBRANDT. Peony. Color yellow, spotted light pink50
REV. DR. BAKER. Cactus. The color is a novel shade of plum25
SAN MATEO STAR. Collarette. Cerise, petals edged white, white collar.....	1.25
SOUV. DE GUSTAV DOAZON. Decorative. Color a pleasing shade of orange-red. It is a vigorous grower, foliage heavy dark green.....	.35
STORM KING. Show. Best white, free bloomer.....	.30
SYLVIA. Decorative. White, edged pink, one of the most desirable for florists.....	.25
SUSAN. Decorative. Color flesh pink.....	.35
TILLAMOOK. Colossal blush, shaded to pink tips....	.35
VELMARY. Decorative. Primrose to gold center overlaid pink	1.50
VIVIAN. Show. White, effectively edged rose violet. Fine35
W. B. CHILDS. Hybrid Cactus. Black-maroon, purple shading35
WM. GUDE. Decorative. Good pure white.....	.35
WM. H. SLOCOMBE. Decorative. Yellow Martinus, yellow center.....	2.00
WM. STARK SMITH. Decorative. Beautiful golden yellow, artistically striped and splashed scarlet.....	.80
WM. AGNEW. Decorative. Color fiery scarlet.....	.35
ZEBRA. Show. Pearl white, edged pink.....	.25
ZEPPELIN. Peony. Violet-mauve, silvery suffusion.	.35

GLADIOLUS

RUFFLED GLORY GLADS

The "Glory" type of Gladioli are distinct from other forms; their originator, Mr. Kunderd, having worked not only towards large size and strong color markings, but particularly for the beautiful ruffled or fluted petals which are their principal distinguishing features. This innovation has come to be accepted as a distinct and valuable class; and embraces some of the finest of recent novelties.

	Each	Doz.	Per 100
JOE COLEMAN. Beautifully ruffled, a strong grower, with many flowers open at a time. Vivid cardinal red brightened by crimson and enriched with maroon	\$0.30	\$2.50	\$20.00
KUNDERD'S FAVORITE. A very tall, strong and vigorous plant with many large, finely ruffled flowers at one time; brilliant orange salmon, deeper in the throat. A dependable, free-bloomer..	.35	3.00	22.00
ORANGE GLORY. Strong orange color, slightly weakening in the throat..	.15	1.50	10.00
PURPLE GLORY. Largest of the class, deeply ruffled, darkly gleaming; maroon-red, its velvet richness heightened by almost black throat blotches. Stock is scarce.....	.60	5.00
REMEMBRANCE Tall spike, many large flowers open at one time. Deep salmon rose-pink, throat heavily zoned20	2.00	14.00
WHITE GLORY. Pure, waxy white, with interior markings of iris-blue....	.20	2.00	15.00
YOUELL'S FAVORITE. Thick buds of old rose, opening mostly at one time into big trusses of broad flowers. Blush white broadly margined tender rose, the lower petal canary blotched crimson.....	.20	2.00	14.00

COLLECTION OF CHOICE NAMED GLADIOLI

	Doz.	100
AL SHIRA. Rich velvety surface; violaceous garnet, roseate in throat, brindled heavily with maroon, the lower petals and buds almost black	\$2.50	\$18.00
AMERICA. Beautiful, soft flesh-pink faintly tinged with lavender.....	.60	4.00
BARON HULOT. Rich, deep indigo blue; fine medium flower.....	1.50	10.00
CAIRO. Bright cherry pink with a white streak at center, and small purple throat....	1.50	10.00
DEFIANCE. Massive blooms; delicate blush white more deeply blushed at throat.....	1.50	10.00

EARLY SUNRISE. 4½ feet high—with full heads of mammoth flowers from 4 to 6 inches across. Color is bright flamy red with a faint orange coating. Very early.....	1.50	10.00
EMPRESS OF INDIA. A glorious rich dark mahogany red uniquely veined.....	2.00	14.00
EVELYN KIRTLAND. Tall and stately; rosy pink, darker at edges dimming to shell-pink at center; brilliant scarlet blotches on lowers	1.00	7.50
FLORA. Clear canary yellow with no markings. Larger than Schwaben; early, and long-stemmed	1.00	7.50
GAIETY. Bright and cheery; solferino pink, the deep creamy throat sprayed with rose..	1.50	10.00
GLORY OF HOLLAND. A reliable white, slightly flushed with pink.....	1.00	7.50
GRETCHEN ZANG. Soft pink merging into scarlet on lower petals.....	1.00	7.50
	1½	1¼-1½
	Inch	Inch
	Per	Per
	100	100
GOV. HANLEY. Tall, showy. Early. Rich cardinal red with deep throat; a first-class bedding and cut flower variety.....	\$ 8.00	\$ 7.50
HELEN FRANKLIN. Pure white with violet stripes on lower petals; slightly ruffled; a great favorite in New England; admired wherever exhibited; good forcer.....	7.00	6.00
HALLEY. A most attractive, early blooming ing sort, with large, well-opened flowers of delicate salmon-pink; flowers well placed on long, graceful spikes; a most beautiful variety. Early, good forcer.....	4.50	4.00
HERADA. Pure mauve with deeper markings on throat, and on lower petals. In great demand as a cut flower.....	7.50	6.00
IDA VAN. Orange-red of brilliant tint; flowers large and wide open; six to eight out at one time; spike straight and strong; showy, attractive and beautiful.....	6.00	4.50
JOE COLEMAN. Very large and vigorous, rich red, one of the finest ruffled varieties..	9.00	7.50
KITTY GRULLEMANS. (Prim.) Large ruffled flowers, light yellow, edge of petals soft orange	11.00	9.00
L'IMMACULEE. Pure white, long spike of many flowers open at one time; very early; one of the best of the white varieties.....	8.00	7.00
LE MARECHAL FOCH. Beautiful shade of light pink; flowers twice as large as America; one of the earliest blooms, blooms the same time as Halley and Wilbrinck: a Holland production.....	6.00	5.00
LILY WHITE. An extremely fine novelty; early, pure white flower; rapid multiplier..	6.50	6.00

LOUISE. The showiest of all Gladioli; wherever shown meets with favor; distinct in form; clear, pure lavender; a blotch of velvet red towards center; resembles the orchids grown by leading florists; this is one variety that differs from all others; big flower; free grower; this variety is in a class by itself.....	8.50	7.50
LINTON. (Prim.) Tall, salmon rose petals bordered deeper. Lower petals golden veined rose. Ruffled	8.00	6.50
LENA GRAETZ. Very meritorious as a cut flower, almost pure white.....	8.00	6.50
MRS. O. W. HALLADAY. Delicate pink, yellow throat, one of the best for florists....	9.00	8.00
MISS EDITH CAVELL. Pure white with small violet stripes; first-class certificate Haarlem	8.50	7.50
MRS. WATT. Glowing American Beauty shade of wine-red; self-color; well opened flower, nearly all flowers open at one time; spike very erect and not too stiff; very distinct variety; created a good deal of comment at recent exhibitions.....	6.50	6.00
MAIDEN'S BLUSH (Hybrid). Exquisite blush-pink; flowers finely formed on long straight stems; free flowering; about 50 per cent produce two flowers.....	6.50	6.00
MYRTLE. The most beautiful pink yet introduced; clearest dainty ruffled rose-pink, softly dissolving into a throat of clear creamy white; early flowering; distinctive in form and color and of good size; Myrtle stands among the elite of "Wizard" Kunderd's many exquisite productions.....	11.00	10.00
MYRA (Hybrid). Large flowering; deep salmon, yellow throated; early, good forcer..	10.00	8.00
MARY FENNEL. One of the patricians of the garden; beautiful light lavender flowers on a tall, slender spike; lower petals primrose yellow with penciling of lavender; perfectly exquisite and distinct; especially recommended.....	8.00	7.50
MISS LUCILLE. A very soft, light shell pink of lavender shade; a most striking and beautiful color for florists' work and an extra fine forcing variety, which adds to its value; medium in height with long stem of six to eight wide open flowers at one time; early.....	7.50	6.00
MRS. FRANCIS KING. Could we grow but a few varieties, Mrs. Francis King would be one of them; a beautiful "Besnard shade" of flame-pink; flowers of giant size on a spike growing four feet high, with from 18 to 20 flowers six to eight open at one time; a magnificent variety.....	4.50	4.00

MRS. FRANK PENDLETON. The sensational beauty, winner of awards and prizes everywhere; the petals show beautiful rose-pink on a pure white ground, contrasting in a most striking way with the deep, rich, velvety blood-red blotch on the lower petals; as showy as an orchid; the most perfect and delicate coloring is produced when spikes are cut and carried indoors as soon as the first blossoms open; no grander variety in existence.	5.00	4.00
MRS. F. C. PETERS. The blooms of this new variety are extra large, of a rich rosy lavender, with a patch of bright crimson on lower petals. More beautiful than Mrs. Frank Pendleton and declared by experts to be the "last word" in the newest introduction of Gladioli.	50.00	40.00
MRS. G. MOULTON. A giant violet red or cerise. Many open at one time.	8.00	6.50
MRS. H. E. BOTHIN. Flesh salmon-pink, flame scarlet center. A large show flower. As a cut flower variety this is second to none and we predict that it will, before a long time, become as popular as that great favorite, Mrs. Frank Pendleton.	16.00	12.00
MARY PICKFORD. Delicate creamy white, throat of finest sulphur yellow.	11.00	10.00
MERTON W. WENTWORTH (Plain Petaled). Very tall and stately plant, blooms large and widely open. Outer petals delicate pink, shading to Marechal Niel yellow. Back of petals show a tint of very delicate lavender. Lower petals wonderfully blotched American Beauty rose color	12.00	10.00
NIAGARA. A light crocus or primrose yellow, slightly tinted with rose-pink in throat; large open flowers on a strong spike; for color, texture and keeping qualities this Gladiolus is one of the very best. .	6.00	5.00
ODIN. A sport of Prince of Wales; salmon color with dark blotches; early, good forcer	8.00	7.50
ORANGE BRILLIANT. (Prim.) Beautiful orange; extra	8.00	7.50
PEACE. Giant white flowers with lilac feathering in throat of two of the petals; flowers correctly placed on a tall, graceful spike	6.00	4.00
PRINCE OF WALES. Delicate salmon-pink; very large flowers; award of merit and first class certificate at Haarlem and London; good forcer; very popular	6.75	6.00
PANAMA. The companion to America, which has become very popular. A perfect Hermosa pink in color, with wide open, wax-like flowers; one of the best of the clear pinks; many awards.	4.50	4.00

PINK PERFECTION. Showy, bright pink, large	11.00	10.00
PRIDE OF GOSHEN. A giant salmon or flesh pink. Flowers large and petals elegantly waved. Tall and vigorous.....	7.00	6.00
PRIMUNELLA (Prim.) A grand ruffled butterfly, orchid-like flower. Orange-saffron color. Beautiful	16.00	12.00
ROSE 1910. Early, rose-pink; very desirable cut flower	6.00	5.50
ROSE PEARL. A beautiful pink sport of Halley; superior to Wilbrinck.....	8.00	7.50
SENTINEL. Tall, strong plant; large pure rose-pink with elegant white penciling....	6.75	6.00
SCHWABEN. The strongest growing and largest of all Gladioli of yellow color; a clear citron yellow with aster-purple tongue on lower petals.....	5.50	4.60
SALMON BEAUTY (Prim.) One of Kunderd's best introductions. Salmon Beauty was awarded the first-class certificate of merit by the Massachusetts Horticultural Society, in the summer of 1919. Early; good forcer.....	7.50	7.00
SOUVENIR. Prim. Pure canary yellow; very much admired; early, good forcer....	9.00	8.50
SONIA (Prim.) Beautiful, large bright red.		
SCARLET PRINCESS. Rich dark scarlet, marked with white on lower petals.....	13.00	11.00
TOPAZ (Prim.) Finest salmon-pink and buff. Very refined and elegant.....	8.00	7.00
VESTA TILLY. Blush pink, small lilac blotch. This valuable variety must be seen to be appreciated. We suggest that you include at least a nominal number in your order...	6.70	6.00
WAR. Deep blood-red, shaded crimson-black; very tall and conspicuous; the best Gladiolus of this beautiful shade of red; try it..	9.00	8.00

PRIMULINUS GLADIOLUS

This new race of Gladiolus has come to be extremely popular; they are easy to grow, the colors are very artistic and embrace shades of yellow, pink and scarlet.

ALICE TIPLADY. A grand, large beautiful orange-saffron color.

DOROTHY WHEELER. Flowers richest rose-pink with lighter throat. Very large and massive.

JEWELL. A clear salmon-pink with golden throat. Tall, erect, early flowering and good forcer.

MAIDEN'S BLUSH. Enchantress pink. The earliest of all forcing varieties. Well shaped flowers on long, strong stems.

MINTIAKA. Upper petals soft pink, lower petals creamy yellow, striped red.

ORANGE BRILLIANT. Brilliant orange.

Unusual shade amongst Prims..... 8.00 7.00

ORANGE GREEN. Large flowers, orange yellow, tinted apricot. A grand variety.

PRIMULINUS. Small primrose-yellow flowers. Fine for perennial borders.

SALMON BEAUTY. Deep salmon with rich salmon-yellow throat.

SOUVENIR. A superb large flowering deep yellow.

SUNBEAM. A beautiful pure yellow. Good forcer.

All of above varieties \$1.25 a dozen, \$8.00 per hundred.

ORANGE QUEEN. \$5.00 per dozen, \$38.00 per hundred.

LILIES

LILIUM AURATUM (Gold Banded Lily of Japan)

Cream, spotted chocolate-red with gold band through center of each petal.

	Price Per
	Standard Full
	Size Case
Size	
8 to 10 inch, 150 to case.....	\$36.00
10 to 11 inch, 90 to case.....	36.00
25 bulbs priced at 100 rate, less than 25 bulbs invoiced at 20 per cent advance over 100 prices.	

LILIUM SPECIOSUM MAGNIFICUM

Improved Rubrum (White Ground, Pink Spotted)

	Price Per
	Standard Full
	Size Case
Size	
9 to 10 inch, 150 to case.....	\$36.00
11 to 12 inch, 90 to case.....	36.00

LILIUM REGALE or Myriophyllum (The

Regal Lily). It is absolutely hardy, and is excellent for forcing. It has been predicted that this will become the Easter Lily of the future, and being so hardy, may be grown at home. The flowers are white-slightly suffused with pink, with a beautiful shade of canary yellow at the center, and extending part way up the trumpet. It is delightfully perfumed, remaining one of the Jasmine, and lacking the heavy, oppressive odor of most lilies. Blooms out-of-doors early in July. Strong bulbs, flowering size.

6.50 50.00

LILUM TIGRINUM

The old-fashioned "Tiger Lily," bright orange Lily with black spots, blooms freely outdoors in midsummer. Single-flowered Splendens, per 100, \$12.00. Double-flowered, per 100, \$14.00.

American grown bulbs of L. Tigrinum seem to do best.

LILIUM CANDIDUM

A most desirable white flowered hardy Lily for outdoors culture. Perfectly hardy and continues to bloom from year to year.

(For summer delivery)

20-22 ctms.....	Market Price
22-24 ctms.....	Market Price
24-26 ctms.....	Market Price
26 ctms. up.....	Market Price

EVERGREENS
ABIES—FIR

A. BALSAMEA (Balsam Fir). A rapid growing native tree with dark green foliage. Handsome while young, becomes somewhat straggling in appearance when it reaches full size.

4-5 ft., each.....	\$ 6.00
5-6 ft., each.....	7.50
6-7 ft., each.....	10.00
7-8 ft., each.....	12.50
8-9 ft., each.....	15.00
9-10 ft., each.....	20.00

A. CONCOLOR. A native of the Rocky Mountains. Needles medium to long and vary in color from dark green to bluish shade. A desirable tree.

2½-3 ft., each.....	\$ 6.00
3½-4 ft., each.....	10.00

A. DOUGLASI (Douglas Fir). A Colorado species of rapid growth. Makes a large symmetrical tree. Foliage bluish green.

3-4 ft., each.....	\$ 6.00
4-5 ft., each.....	9.00
5-6 ft., each.....	11.00
6-7 ft., each.....	14.00
7-8 ft., each.....	18.00
8-10 ft., each.....	\$20.00 30.00

JUNIPERUS—JUNIPER

J. VIRGINIANA (Red Cedar). Pyramidal habit; bright, rich green foliage.

2-2½ ft., each.....	\$ 3.00
2½-3 ft., each.....	4.00
3-4 ft., each.....	6.50
4-5 ft., each.....	9.50
5-6 ft., each.....	12.00

J. VIRGINIANA GLAUCA (Blue Cedar). A blue form of the above. Holds bluish color throughout the season.

3-4 ft., each.....	\$ 7.50
4-5 ft., each.....	11.00
5-6 ft., each.....	15.00

J. COMMUNIS DEPRESSA (Spreading Juniper)

18 to 20 in. spread, each.....	\$5.00
20 to 24 in. spread, each.....	6.00
24 to 30 in. spread, each.....	9.00

J. PFITZERIANA (Pfitzer's Juniper). Broad, spreading, irregular habit, usually as broad as it is high. Grayish green color. Desirable.

12-18 in. spread, each.....	\$5.00
18-24 in. spread, each.....	6.00
24-30 in. spread, each.....	8.50

J. SABINA (Savin Juniper). 3 to 4 feet. Of dwarf, spreading growth. Hardy and thrives well on poor soil; a favorite for rock work.

- 15-18 in. spread, each.....\$4.00
- 18-24 inch spread, each..... 6.00
- J. TAMARISCIFOLIA.** Of low, trailing habit, foliage with bright glaucous green, very dense. Good for banks and rock work.
- 18-24 in. spread, each.....\$5.00

PICEA CANADENSIS

- WHITE SPRUCE.** Tall, pyramidal, very shapely; foliage silvery-blue. Excellent for grouping.
- 3-4 ft., each.....\$6.00
 - 4-5 ft., each..... 9.00
 - 5-6 ft., each..... 12.50

P. EXCELSA

- NORWAY SPRUCE.** Best Spruce for greens and hedges. Dark green; rapid growth.
- 2-3 ft., each.....\$ 3.00
 - 3-4 ft., each..... 4.00
 - 4-5 ft., each..... 6.50
 - 5-6 ft., each..... 8.00
 - 6-7 ft., each..... 10.00

P. PUNGENS

- COLORADO SPRUCE.** Symmetrical; very hardy; foliage light green. For specimen or windbreak.
- 2-3 ft., each.....\$ 6.00
 - 3-4 ft., each..... 10.00

P. PUNGENS GLAUCA

- (Colorado Blue Spruce)
- 2½-3 ft., each.....\$12.50
 - 3½-4 ft., each..... 16.00

P. PUNGENS KOSTERI

- KOSTER COLORADO SPRUCE.** Like variety glauca, but more distinct in rich color of silvery green. Prices on application.

PINUS—PINE

P. AUSTRIACA (Austrian or Black Pine). 50 feet. A strong, sturdy grower; foliage dark green.

- 3-4 ft., each.....\$ 7.50
- 4-5 ft., each..... 10.00
- 5-6 ft., each..... 12.50

P. STROBUS (White Pine). Strong, rapid growing tree, with light, green foliage. The best and most ornamental of our native Pines.

- 3-4 ft., each.....\$4.00
- 4-5 ft., each..... 6.00

P. SYLVESTRIS (Scotch Pine). 30 to 35 feet; very noble and rapid grower; tree has erect shoots and glossy green foliage.

- 3-4 ft., each.....\$ 6.00
- 4-5 ft., each..... 9.00
- 5-6 ft., each..... 12.00

P. MONTANA MUGHUS (Dwarf Mountain). Of compact, spreading growth. Is more bush than tree; valuable in landscape work where a low, broad evergreen is needed. Very hardy.

12-18 in. spread, each.....	\$3.00
18-24 in. spread, each.....	4.00
24-30 in. spread, each.....	6.00

RETINOSPORA (CHAMAECYPARIS)

R. PISIFERA

SAWARA CYPRESS. Tall, pyramidal shape; broad, flat foliage of deep, glossy green. A beautiful formal specimen when clipped.

15-18 in., each.....	\$4.50
18-24 in., each.....	5.00

RETINOSPORA PISIFERA, AUREA

GOLDEN SAWARA CYPRESS. Like type in form and habit.

15-18 in., each.....	\$4.50
18-24 in., each.....	5.00

Specimens up to 6 ft. Prices on request.

R. PLUMOSA

PLUME CYPRESS. This, with the golden variety, stands shearing best. Useful for edges and formal work. A tall pyramidal shape.

15-18 in., each.....	\$4.00
18-24 in., each.....	5.00

R. PLUMOSA, AUREA

GOLDENPLUME CYPRESS. One of hardiest. The rich golden growth of Spring holds well through the Summer. One of the best for specimens or hedges.

15-18 in., each.....	\$4.00
18-24 in., each.....	5.00

THUJA OCCIDENTALIS

AMERICAN ARBORVITAE. Columnar; close; admits severe clipping. Splendid hedge plant. Of merit for formal use.

2-2½ ft., each.....	\$2.25
2½-3 ft., each.....	3.00
3-3½ ft., each.....	3.50
3½-4 ft., each.....	4.50
4-5 ft., each.....	6.50
5-6 ft., each.....	8.50

T. OCCIDENTALIS, GLOBOSA

GLOBE ARBORVITAE. Dwarf, close, compact, gray-green. For accent in formal use.

12-18 in., each.....	\$4.50
18-24 in., each.....	5.50
24-30 in., each.....	9.50

T. OCCIDENTALIS PYRAMIDALIS

PYRAMIDAL AMERICAN ARBORVITAE. Its tall slender habit makes it splendid for formal use; a dense dark green. Columnar form.

3-3½ ft., each.....	\$5.00
3-4 ft., each.....	6.50

THUJA OCCIDENTALIS, WAREANA

WARE ARBORVITAE. Striking dark grayish-green color. Fine for exposed positions.

2-2½ ft., each.....	\$4.50
2½-3 ft., each.....	6.00

TSUGA CANADENSIS

CANADA HEMLOCK. For enlivening Winter aspect of deciduous planting, especially in woods or shade; in graceful masses, as a hedge plant that stands clipping, or as a specimen this tree is invaluable. Our hemlocks are closely sheared at intervals to produce extra heavy, bushy trees.

	Each	10
2½ to 3 ft.....	\$4.50	\$10.00
3½-4 ft., each.....	6.50	60.00
4 to 5 ft.....	10.00	90.00

HARDY SHRUBS

BERBERIS—BARBERRY

THUNBERG OR JAPANESE BARBERRY. 3 to 4 feet. Is used largely for low hedges and in front of taller growing shrubs. Blossom small, yellow, and is followed by berries that turn bright red in Autumn, and hang on well into the Winter. Leaves are small and change to a beautiful coppery red in the Fall. A very desirable shrub.

	10	
1½-2 ft.....		\$3.00
2-2½ ft.....		4.50
2½-3 ft.....		6.00

BOX BARBERRY. This is a dwarf variety that is being used in the East for borders and work of that sort. We are trying this out, hope it will stand our climate, as it will be very useful in landscape work.

	10	100
1-year, 6-8 in.....	\$1.75	\$16.00
2-year, 8-12 in.....	2.00	20.00
3-year, 12-15 in.....	3.50	30.00
4-year, 18-24 in.....	6.50	60.00

CORNUS, DOGWOODS OR OSIERS

Strong growing shrubs, particularly attractive for their wealth of flowers, as well as abundant berries and leaf coloring in Summer and Fall, and their bright colored branches in Winter.

C. SIBIRICA (Siberian Dogwood). 8 to 10 ft. A hardy, free-growing shrub; bark bright red in Winter.

	10	
3-4 ft.....		\$4.50
4-5 ft.....		6.50
2-3 ft.....		4.00
3-4 ft.....		6.00
4-5 ft.....		7.50

COCHORUS—KERRIA, GLOBE FLOWER

K. JAPONICA. 4 to 6 feet. A free-flowering shrub with upright, slender, green branches. The tops often kill back, but new shoots come up that bloom from July until frost. Flowers are double, yellow. A desirable shrub.

	10	
2-3 ft.....		\$7.00

CORYLUS—HAZEL; FILBERT

C. AMERICANA (Common Hazelnut). 4 to 8 feet. A native of most of the northern states. The nuts are smaller than the European Filberts, but are sweet and of good quality. Shrub rather coarse, very hardy.

	10	
3-4 ft.....		\$5.00

For naturalizing we have collected plants which are much cheaper.

COTONEASTER

C. ACUTIFOLIA. A very desirable shrub for hedge purposes. Foliage is rich, glossy green. Very hardy.

18-24 in.....	10
2-3 ft.....	\$4.50
	6.00

CYDONIA—QUINCE

C. JAPONICA (Japan Quince). 3 to 5 feet. Foliage bright green and glossy. Bright scarlet-crimson flowers in early Spring before the leaves are developed. Blossom buds not perfectly hardy in this latitude.

2-2½ ft.....	10
2½-3 ft.....	\$6.50
	8.00

DEUTZIA

DEUTZIA LEMOINEI (Lemoine Deutzia).

2-3 ft.....	10
	\$7.50

PRIDE OF ROCHESTER (Pride fo Rochester Deutzia).

2-3 ft.....	10
3-4 ft.....	\$4.50
	6.00

ELAEAGNUS—OLEASTER

E. ANGUSTIFOLIA (Russian Olive). 15 to 25 feet. A very large shrub or small tree; the leaves are narrow and silvery white in color; blossoms are small, yellow and very fragrant; perfectly hardy.

3-4 ft.....	10
4-5 ft.....	\$5.00
	6.50

EUONYMUS—SPINDLE TREE

E. ALATUS (Cork-Barked Euonymus). Of dwarf, compact habit; branches four-winged; leaves small; fruit red. One of the most beautiful of shrubs in Fall when foliage turns bright scarlet.

2½-3 ft., each.....	\$2.00
3-3½ ft., each.....	3.00
3½-4 ft., each.....	4.50

E. ATROPURPUREUS (Burning Bush; Wahoo). 6 to 10 feet. Tall-growing, native shrub, with leaves larger than the European, that turn scarlet in Autumn. Its most attractive feature is the abundance of bright red berries that are carried well into the Winter.

18-24 in.....	10
2-3 ft.....	\$4.00
3-4 ft.....	6.00
	8.00

FORSYTHIA—GOLDEN BELL

These are pretty shrubs of medium size. Natives of

China and Japan. The flowers are drooping yellow and appear very early in the Spring before the leaves. Bush hardy, but flower buds kill in severe Winters.

F. INTERMEDIA. One of the hardiest and most floriferous of the Forsythias. Blooms very early, before leaves appear.

2-3 ft.....	10
3-4 ft.....	\$4.50
	6.00

F. SUSPENS. Long, slender, curving branches. May well be called Weeping Forsythia.

2-3 ft.....	10
3-4 ft.....	\$4.50
	6.00

HYDRANGEA

H. ARBORESCENS GRANDIFLORA ALBA. This magnificent hardy American shrub is the very finest addition to this class of plants found in many a year.

18-24 in.....	10
24-30 in.....	\$6.00
	7.00

H. PANICULATA GRANDIFLORA. 5 to 6 feet. One of the best shrubs in cultivation. Is a strong grower and produces large panicles of white flowers in August that change to a delicate pink and then green, lasting until Winter. To produce best results, should be grown in rich soil with plenty of manure, and be severely pruned each season, as the bloom is produced on the ends of the new wood. Very showy and effective.

18-24 in.....	10
24-30 in.....	\$6.00
	7.00

LIGUSTRUM—PRIVET

The Ligustrums are not only good hedge plants, but are one of the fine things for groups on the lawn. They are almost evergreen, and of dense, shapely habit. Sometimes in a very severe Winter, they will kill back a little, but soon recover.

AMOR RIVER (North). A fine shrub of upright growth. Its pure white flowers appear in June and are followed by bluish black seeds.

2-2½ ft.....	10
2½-3 ft.....	\$2.50
3-3½ ft.....	3.00
3½-4 ft.....	3.50
4-4½ ft.....	4.50
	5.00

L. IBOTA

IBOTA PRIVET. Upright; white flowers; black berries. The hardiest of all privets.

2 to 3 ft. Heavy.....	10	100
3 to 4 ft. Heavy.....	\$3.00	\$30.00
4 to 5 ft. Heavy.....	3.50	35.00
	6.00	60.00

L. IBOTA REGELIANUM

REGEL PRIVET. Low spreading shrub; white flowers; black berries. Suitable for borders or hedges.

	10
2 to 3 ft.....	\$3.00
3 to 4 ft.....	4.50

LONICERA—BUSH HONEYSUCKLE

The following sorts are of erect, upright growth; flowers are followed by small berries. (See Climbing Vines for other Honeysuckles.)

L. BELLA ALBIDA. One of the finest of the Bush Honeysuckles, being a very profuse bloomer, and the bush later completely covered with bright red berries.

	10
3-4 ft.....	\$4.50
4-5 ft.....	6.00
5-6 ft.....	7.50

L. TATARICA (Tartarian Honeysuckle). 6 to 8 feet. A strong, upright growing shrub; blossoms are pink and make a fine contrast with the dark green foliage.

	10
3-4 ft.....	\$4.50
4-5 ft.....	6.00
5-6 ft.....	7.50

L. TATARICA VAR. GRANDIFLORA. Red, striped with white.

	10
3-4 ft.....	\$4.50
4-5 ft.....	6.00
5-6 ft.....	7.50

L. MORROWI. 4 to 5 feet. From Japan. Bush is a spreading grower; blossoms yellowish white, followed by berries. Desirable as a hedge plant.

	10
3-4 ft.....	\$4.50
4-5 ft.....	6.00
5-6 ft.....	7.50

PHILADELPHUS—SYRINGA OR MOCK ORANGE

Are mostly large shrubs, growing from 6 to 10 feet high. Of vigorous habit, very hardy, with large handsome foliage and beautiful white flowers produced in great profusion. They merit a place in every collection of shrubbery.

P. CORONARIUS (Garland Syringa). 5 to 6 feet. One of the first to bloom. Pure white, highly scented flowers.

	10
2-3 ft.....	\$4.00
3-4 ft.....	5.00
4-5 ft.....	7.00

P. CORONARIUS VAR. ALBA FLORE PLENO (Garland Syringa). Flowers are partly double; very fragrant.

	10
2-3 ft.....	\$4.00
3-4 ft.....	5.00
4-5 ft.....	7.00

P. CORONARIUS VAR. AUREUS (Golden-Leaved Syringa). A very pretty plant, growing 4 to 5 feet high, with golden yellow foliage. It keeps its color the entire season and is valuable for planting with purple-leaved shrubs.

	10
3-4 ft.....	\$6.00
4-5 ft.....	7.50

P. GRANDIFLORA. 8 to 10 feet. The strongest grower and largest flower of the group; blooms in June; slightly fragrant.

	10
3-4 ft.....	\$4.00
4-5 ft.....	5.50
5-6 ft.....	7.50

P. LEMOINEI ERECTUS. A charming variety of upright growth; flowers small, yellowish white, fragrant, completely covering the bush. Dwarf habit.

	10
2-3 ft.....	\$4.00
3-4 ft.....	5.00

PHYSOCARPUS OPULIFOLIUS

NINE BARK. Quick growing, tall shrub, useful for screens; white flowers followed by bright red fruit in July.

	10
3 to 4 ft.....	\$5.00
4 to 5 ft.....	6.00

P. OPULIFOLIUS AUREUS

Showy yellow foliage, bronze in Summer and Fall; white flowers.

	10
2 to 3 ft.....	\$4.50
3 to 4 ft.....	5.50
4 to 5 ft.....	6.50

PRUNUS—FLOWERING PLUM

P. PISSARDI (Purple-Leaved Plum). 8 to 10 feet. A small tree or shrub. The foliage and young shoots are of a rich reddish purple, which they retain throughout the season. Not perfectly hardy in this latitude.

	10
2-3 ft.....	\$ 8.00
3-4 ft.....	10.00
4-5 ft.....	14.00

P. TRILOBA (Double-Flowering Plum). 5 to 8 feet. A large shrub or small tree; the branches are covered early in the season, before leaves appear, with small, double, pink flowers. Very desirable.

	10
2-3 ft.....	\$ 8.00
3-4 ft.....	10.00
4-5 ft.....	15.00

NEWPORT. This new red-leaved Plum originated at the Minnesota State Fair Breeding Farm. The leaves are bright red and retain their color throughout the entire season. Valuable as single specimens and in landscape work.

	10
2-3 ft.....	\$10.00
3-4 ft.....	12.00

PYRUS—FLOWERING ALMOND

P. JAPONICA FL. PL. (Dwarf Double-Flowering Almond). 2 to 4 feet. These are small shrubs that are covered early in the season before the leaves appear with small double, roseline flowers. We have them in both white and pink.

	10
2-3 ft.....	\$18.00
3-4 ft.....	22.00

SORBARIA SORBIFOLIA

A highly ornamental shrub very valuable in the North. Usually known as Spirea Sorbifolia. Its botanical name is derived from Sorbus, the generic title of the Mountain Ash family, and was given to it because its leaves resemble those of the Mountain Ash. An Asiatic shrub introduced to America many years ago, and has escaped from cultivation in many localities, particularly in the middle states.

	10
3-4 ft.....	\$6.00
4-5 ft.....	7.50

RHAMNUS CATHARTICA

COMMON BUCKTHORN. Tall, twiggy shrub, excellent for hedges or border. White flowers in June; black fruit.

	10
3-4 ft.....	\$5.00
4-5 ft.....	6.50
5-6 ft.....	8.00

R. FRANGULA

GLOSSY BUCKTHORN. Tall, spreading; clean dark green foliage; fruit red, turning black.

	10
3-4 ft.....	\$5.00
4-5 ft.....	6.00

RHUS (SUMACH)

RHUS COTINUS (Sumach) (Purple Fringe, or Smoke Tree). A curious, large growing shrub, forming broad, round headed bushes.

	10
18 to 24 in.....	\$4.00
2 to 3 ft.....	4.50
3 to 4 ft.....	5.00

TYPHINA (Staghorn Sumach).

3 to 4 ft.....	.75c each, \$6.50 for 10
4 to 5 ft.....	\$1.00 each, \$9.00 for 10

LACINIATA (Fern Leaved Staghorn Sumach).

2 to 3 ft.....	.60c each, \$5.50 for 10
3 to 4 ft.....	.75c each, \$7.00 for 10

ROBINIA HISPIDA (ROSE ACACIA)

Strong growing shrub, compound foliage, rose colored flowers in May and June, showy in masses.

	10
2 to 3 ft.....	\$ 7.50
3 to 4 ft.....	10.00

RUBUS ODORATUS

FLOWING RASPBERRY. Medium height; flowers rosy purple in Summer. Excellent for shady places.

	10
2 to 3 ft.....	\$5.00

Price for collected succors on application.

SPIREA

SPIRAE BUMALDA. Very handsome; rose colored flowers. Dwarf.

	10
1½-2 ft.....	\$5.00

ANTHONY WATERER. Grows dwarf. The brightest colored of all the Spiraeas.

	10
1½ ft.....	\$6.00
2 ft.....	7.00

OPULIFOLIA (Ninebark). Of vigorous growth, with flat clusters of white flowers.

	10
2-3 ft.....	\$4.50
3-4 ft.....	5.50

PRUNIFOLIA FL. PL. (Bridal Wreath). Small, double, white flowers, borne close to the branches.

	10
2-3 ft.....	\$5.00
3-4 ft.....	7.00

THUNBERGII. Pure white flowers.

	10
18-24 inc.....	\$4.50
24-36 in.....	6.00

VANHOUTTEI. Pure white flowers. Tall.

	10
2-3 ft.....	\$3.50
3-4 ft.....	5.00
4-5 ft.....	6.50

SYMPHORICARPOS**SYMPHORICARPOS RACEMOSUS****SNOWBERRY**

Low, shade-loving plant; large white berries in fall and carried through the winter.

	10
2½-3 ft.....	\$5.00
3-4 ft.....	6.00

SYMPHORICARPOS VULGARIS**Coral Berry**

Dwarf shrub thriving in shade; coral-red berries persistent until late winter.

	10
2½-3 ft.....	\$5.00
3-4 ft.....	6.00

SYRINGA—LILAC

This group is so well known that there is no need of extended description. To reach perfection, should have moist, rich soil. We would call special attention to the newer varieties, as great improvement has been made in them.

S. PERSICA (Persian Lilac). Usually does not grow to be more than 4 to 6 feet in height; branches slender; foliage small; loose clusters of purple flowers.

	10
2-3 ft.....	\$6.50
3-4 ft.....	9.00

S. VULGARIS (Common Purple Lilac). 8 to 10 feet. Bluish purple flowers; well known.

	10
2-3 ft.....	\$5.00
3-4 ft.....	6.00
4-5 ft.....	7.00

S. VULGARIS VAR. ALBA (Common White Lilac). 8 to 10 feet. Cream-white flowers.

	10
2-3 ft.....	\$5.50
3-4 ft.....	7.50

SINGLE LILACS

CHARLES X. 6 to 8 feet. A strong growing sort, with large, shining leaves; trusses large, reddish purple.

	10
3-4 ft.....	\$15.00

MARIE LEGRAYE. 6 to 8 feet. Large panicles of white flowers. One of the very best.

	10
3-4 ft.....	\$15.00

LUDWIG SPAETH. 6 to 8 feet. Panicles long; individual flowers large, dark purplish red, distinct; the finest of its color.

	10
3-4 ft.....	\$15.00

LILAC VILLOSA. 6 to 8 feet. From Japan. The large branching panicles appear about two weeks after the other Lilacs, are borne well above the bush and vary in color from light pink to lavender. The heavy, leathery, glossy dark green foliage (entirely different from other Lilacs) make it

	10
2-3 ft.....	\$6.00

TAMARIX

T. AMURENSIS. 6 to 8 feet. A very beautiful shrub, with small leaves somewhat resembling those of the Juniper, and delicate, small, pink flowers in spikes. The hardiest Tamarix.

	10
2-3 ft.....	\$5.00
3-4 ft.....	6.00

VIBURNUM—ARROW-WOOD

V. DENTATUM. Has glossy green foliage, white flowers in June; crimson berries turning blue in Autumn. One of the best shrubs for landscape planting.

	10
2-3 ft.....	\$5.00
3-4 ft.....	7.50

V. LENTAGO (Sheepberry). Grows 20 to 30 feet high, white flowers in cymes in May and June. Large, oval, blue-black fruit in Autumn.

	10
2-3 ft.....	\$5.00
3-4 ft.....	7.50

V. LANTANA. 6 to 8 feet. Large growing shrub with soft, heavy leaves; large clusters of white flowers in May, followed by red berries that turn black as they ripen; retains its foliage late.

	10
2-3 ft.....	\$7.00
3-4 ft.....	9.00

V. OPULUS (High Bush Cranberry). 5 to 6 feet. Both ornamental and useful. Its late red berries, resembling cranberries, hang until destroyed by frost late in the Fall. Resemble the snowball in wood and foliage.

	10
2-3 ft.....	\$6.00
3-4 ft.....	7.50

V. OPULUS VAR. STERILE (Common Snowball; Guelder Rose). 6 to 8 feet. A well known favorite shrub of large size, with globular clusters of pure white, sterile flowers the latter part of May.

	10
2-3 ft.....	\$6.00
3-4 ft.....	9.00

WEIGELIA (DIERVILLA)

Old-time favorites, but just as popular today, giving a rich display of bloom in May and June.

W. CANDIDA. Pure white, blooming profusely in June through the summer.

	10
2-3 ft.....	\$6.00
3-4 ft.....	7.50

W. FLORIDA ROSEA. Rose Pink—

	10
2 to 3 ft.....	\$6.00
3 to 4 ft.....	7.50

W. JAPONICA, VAR. RUBRA. Red—

	10
2 to 3 ft.....	\$6.00
3 to 4 ft.....	7.50

EVA RATHKE. Rich reddish purple.

	10
1½-2 ft.....	\$7.00
2-3 ft.....	9.00

TREES

ACER

DASYCARPUM (SACCHARINUM) Silver Maple.	
1½-2 in. Caliper, each.....	\$4.50
2-2½ in. Caliper, each.....	6.00
2½-3 in. Caliper, each.....	7.50
PLANTANOIDES (Norway Maple).	
1-1½ in., each.....	\$ 3.00
1½-2 in., each.....	4.50
2-2½ in., each.....	5.50
2½-3 in., twice transplanted specimens.....	7.50
3-4 in., twice transplanted specimens.....	10.50
SCHWEDLERI (Schwedler Maple).	
2 in., each.....	\$4.50
RUBRUM (Red Maple).	
Price on application.	
SACCHARUM (Sugar Maple).	
2-2½ in., ten.....	\$5.50
2½-3 in., ten.....	7.00
3½-4 in. Specimen, twice transplanted.....	15.00

AESCULUS GLABRA

OHIO BUCKEYE. Large growing; good foliage; yellow flowers.

Price on application.

A. HIPPOCASTANUM

EUROPEAN HORSE CHESTNUT. Large; symmetrical; profuse white flowers. For lawn or group.

Price on application.

BETULA (BIRCH)

BETULA ALBA GRACILIS (Cut-leaf Weeping Birch).

PENDULA (European Weeping Birch).

LUTEA (Yellow Birch).

PAPYRIFRA (Canoe Birch).

Price for above on application.

CATALPA BIGNONIODES NANA Umbrella Catalpa (Bungei). 2 year.

5 ft. stems, each.....\$3.50

6 ft. stems, each..... 5.00

CELTIS OCCIDENTALIS (Hackberry).

Price on application.

CERCIS CANADENSIS (American Redbud).

Price on application.

CRATAEGUS COCCINEA (Thicket Hawthorn).

3-4 ft., each.....\$1.00

4-5 ft., each..... 1.25

5-6 ft., each..... 1.75

C. CRUS-GALLI

COCKSPUR THORN. Small, bushy tree; attractive flowers, long thorns, showy fruit; excellent for hedges.

Price on application.

FRAXINUS AMERICANA

WHITE ASH. One of the handsomest of our large broad-headed trees suitable for street and avenue or park planting. In autumn the coloring of the foliage is unusually beautiful.

1½-2 in. Caliper, each.....\$2.50

2-2½ in. Caliper, each..... 3.50

2½-3 in. Caliper, each..... 5.00

Price for specimens on request.

FLOWERING APPLES

The Flowering Crab Apples (*Pyrus*) are ornamental little trees clothed with fragrant flowers in Spring, followed by attractive yellow or orange Autumnal fruit. Ideal for border plantings and as background for the flower garden, as well as for specimen planting.

MALUS BACCATA

SIBERIAN FLOWERING CRAB. Free, robust, round-headed tree with white flowers.

4 to 5 ft., each.....\$2.50

5 to 6 ft., each..... 3.50

6 to 7 ft., each..... 4.00

7 to 8 ft., each..... 5.00

8 to 9 ft., each..... 6.50

M. CORONARIA

WILD SWEET CRAB. Fragrant blush bloom and large fruit.

4 to 5 ft., each.....\$2.50

5 to 6 ft., each..... 3.50

6 to 7 ft., each..... 4.00

7 to 8 ft., each..... 5.00

M. FLORIBUNDA

JAPANESE FLOWERING CRAB. Profuse rose-colored flowers followed by red fruit.

4 to 5 ft., each.....\$2.50

5 to 6 ft., each..... 3.50

6 to 7 ft., each..... 4.00

7 to 8 ft., each..... 5.00

M. FLORIBUNDA ATROSANGUINEA

CARMINE CRAB. Very showy; rich, rose-red blossoms.

4 to 5 ft., each.....\$2.50

5 to 6 ft., each..... 3.50

6 to 7 ft., each..... 4.00

P. ANGUSTIFOLIA (Bechtel's Double-Flowering Crab). 20 feet. About the middle of May the trees are covered with beautiful, double, pink, sweet scented flowers, that at a distance look like small roses. Tree is a moderate grower, hardy and of upright habit. One of the very best.

4-5 ft., each.....\$4.00

5-6 ft., each..... 6.00

MORUS—MULBERRY

M. TATARICA (Russian Mulberry). Is largely planted for screens and windbreaks; also used for shade in hen yards. The fruit, which is rather small, is greatly appreciated by the birds and fowls.

3 to 4 ft..... 10
\$5.00

4 to 5 ft..... 7.50

M. TATARICA PENDULA (Weeping Russian Mulberry). One of the most graceful weeping trees in existence, forming a perfect umbrella-shaped head, with long, slender branches drooping to the ground parallel to the stem. It has beautiful foliage, rather small, handsomely cut. Is grafted on stems 6 to 8 feet high.

1½-2 in., each.....\$4.50

2-2½ in., each..... 6.00

2½-3 in., each..... 9.00

POPULUS—POPLAR

P. BOLLEANA. The compact, upright habit of growth combined with silvery foliage make this a very desirable addition to our ornamental trees.

6- 8 ft., each.....\$2.00

8-10 ft., each..... 3.00

P. MONILIFERA (Carolina Poplar). 40 to 50 feet. We think this leads as a rapid-growing tree. Needs some pruning-back for a few years after planting; rarely produces suckers; also good for screens and shelter belts. Foliage large, glossy green.

6- 8 ft., each.....\$1.00

8-10 ft., each..... 1.50

10-12 ft., each..... 2.50

P. NIGRA ITALICA

LOMBARDY POPLAR. Tall, rapid growing. Useful to break horizontal monotony, or grouped to screen objectionable views.

6- 8 ft., each.....\$1.25

8-10 ft., each..... 2.00

QUERCUS—OAK

Q. MACROCARPA (Burr Oak). 30 to 40 feet. A native western tree of medium size. Its striking characteristics are the mossy cup that holds the acorn, the corky bark on the branches, and the large, heavy, dark green leaves.

1 in. diameter.....\$2.50

1½ in. diameter..... 4.00

2 in. diameter 5.00

2½ in. diameter..... 6.00

Q. PALUSTRIS (Pin Oak). 40 to 50 feet. The branches droop with age. Foliage deep green, and finely divided. One of the best for street planting.

1 in. diameter.....	\$2.50
1½ in. diameter.....	4.00
2 in. diameter.....	4.50
2½ in. diameter.....	6.00

Q. RUBRA (Red Oak). 50 to 60 feet. An American variety of large size and rapid growth. Foliage purplish red in Autumn.

1 in. diameter.....	\$2.50
1½ in. diameter.....	4.00
2 in. diameter.....	4.50
2½ in. diameter.....	5.00

SORBUS AUCUPARIA

EUROPEAN MOUNTAIN ASH. For border plantation, where bright scarlet berries enliven Winter landscape.

TILIA—LINDEN

T. AMERICANA (American Linden or Basswood). 50 to 60 feet. One of the best large sized, rapid growing trees. Suitable for either street or lawn planting. Should be given plenty of room to develop. Foliage large; flowers borne in large clusters, are very fragrant.

E. EUROPAE (European Linden). Not so large a tree as the former, more compact in form. The leaves are smaller than the American, but similar in shape.

2 in. diameter, each.....	\$10.00
3½ in. diameter, each.....	12.50
4 in. diameter, each.....	14.00

ULMUS AMERICANA—AMERICAN ELM

1½-2 in., each.....	\$3.50
2-2½ in., each.....	5.00
2½-3 in., each.....	6.00

CAMPESTRIS (Procera) (English Elm).

2½ in., each.....	9.00
3-3½ in., each.....	15.00

GLABRA CAMPERDOWN (Camperdown Elm).

4 year heads, B. & B., each.....	20.00
----------------------------------	-------

ROSES

EVERBLOOMING HYBRID TEA ROSES

\$1.00 each—\$9.00 per ten

Not less than five plants of a variety at the ten rate

- Carolina Testout, rose.
- Duchess of Wellington, rose-madder.
- General McArthur, bright crimson.
- George C. Wand, vermillion.
- Hadley, rich crimson-scarlet.
- Jonkheer, J. L. Mock, deep imperial pink.
- Kaiserine Augusta Victoria, pearly-white.
- Killarney, pink.
- Killarney, white.
- Lady Alice Stanley, coral rose.
- Laurent Carle, brilliant carmine.
- Madame Cochet, pink.
- Madame Cochet, white.
- Madame Edouard Herriot, coral red.
- Madame Leon Paine, silvery salmon, orange yellow shadings.

ROSA HUGONIS—A Paying Proposition Golden Rose of China

"Best hardy yellow Rose we know of, and most popular species in America."—Dr. E. H. Wilson, Arnold Arboretum.

Tried and tested by Nurserymen, everywhere, Hugonis has made good with tremendous sales to its credit. Valuable for lawn specimens; with shrubbery; along porch steps; as a hedge or boundary; and a beautiful show when in bloom; three weeks ahead of most other Roses.

Dormant own-root plants of top-notch quality.

Planted against evergreens or in front of Spirea von Houtter with Delphinium in front of Rose Hugonis it makes a beautiful border, all three blooming at same time.

3-4 ft. extra.....\$1.50

HARDY CLIMBING AND RAMBLER ROSES

Strong 2-Year Plants

	Each Doz.	
AMERICAN PILLAR. Bears heavy trusses of pink flowers	\$1.00	\$9.00
CLIMBING AMERICAN BEAUTY. Produces rosy crimson flowers.....	1.00	9.00
CRIMSON RAMBLER. Double crimson flowers in great profusion.....	1.00	9.00
DOROTHY PERKINS. Bears beautiful clusters of pink blooms.....	1.00	9.00
EXCELSA. The red Dorothy Perkins.....	1.00	9.00
LADY GAY. Cerise-pink; very attractive.....	1.00	9.00
Mary, Countess of Ilchester, crimson.		
Ophelia, salmon pink.		

TAUSENDSCHON. Delightful shade of soft pink90	9.00
WHITE DOROTHY PERKINS. Pure white..	.90	9.00
YELLOW RAMBLER. Deep golden yellow....	.90	9.00

DWARF POLYANTHA OR "BABY ROSES"

- BABY DOROTHY, Pink.
- BABY RAMBLER, Crimson.
- ELLEN PAULSON, Dark Pink.
- GEORGE ELGER, Yellow.
- ORLEANS, Brilliant Red.

	1	10
2 year No. 1.....	\$1.00	\$9.00

HYBRID PERPETUAL ROSES

These are the "June Roses" so admirably suited for garden culture, the formation of Rose beds, hedges, etc. In June and July these lovely Roses are brilliant with great, intensely perfumed flowers of richest colors, far exceeding the other classes in size and vivid effect.

CAPT. HAYWARD. Large, full flowers which are high built, with characteristically rolling edges to the petals. The color is a strong, rich, velvety carmine-crimson.

EUGENE FURST. A beautiful velvety crimson, with distinct maroon shading; usually in clusters.

FRAU KARL DRUSCHKI. The regal "White American Beauty." The distinctive form and expression of its bud, half opened state and maturity are a three-fold revelation of exquisite charm and beauty. Large flowers of waxy paper white in June; yielding their final outburst with the first snow of Fall.

GEORGE ARENDS. (Pink Druschki.) A most notable addition to the list. In growth it is vigorous, furnishing long stems comparable with Neyron. Its profuse and recurrent bloom is a delicious shade of satiny, clear rose-pink a little deeper than Laing, a bit softer than Neyron. The earlier stages of bloom are remindful of Druschki, but when open it is the higher-built, fuller type of its two pink competitors.

GEN. JACQUEMINOT. ("Jacq. Rose.") The oldest reliable red; free blooming, rich crimson scarlet.

JOHN HOPPER. A beautiful dark pink.

JUBILEE. Pure red, shading to crimson and maroon at the base of petals; one of the darkest.

MAGNA CHARTA. Strong growing, early blooming with large flowers of bright rose-pink.

MARSHALL P. WILDER. Bright, cherry red; a shapely globular flower and free bloomer.

MRS. J. H. LAING. A favorite sort; satiny flowers of soft, clear pink, remarkably free and continuous.

PAUL NEYRON. One of the finest hardy Roses ever grown. It blooms intermittently from June to November, on long, smooth, thornless stems, furnishing a vast quantity of uniform flowers, 4 to 6 inches across. Color a bright ruddy pink. Particularly good in Autumn.

PRINCE CAMILLE DE ROHAN. Very dark velvety crimson, changing to intense maroon; the deepest red.

Above varieties, \$1.00 each; \$9.00 per 10, for strong, 2-year field grown plants.

MOSS ROSES

BLANCHE MOREAU. Pure white, large, full of perfect form, and well furnished with deep green moss. Very strong grower.

CRESTED MOSS. The deep pink buds are surrounded with a mossy fringe and crest; fragrant. One of the best.

HENRI MARTIN. Fine rosy red. Large, globular flowers, well mossed; fragrant. To our mind the best of all the Mosses.

75 cents each; ten.....\$6.50

SWEETBRIER ROSE

ENGLISH SWEETBRIER. This old garden favorite is valued on account of the delightful fragrance of the foliage. They require very little in the way of pruning and the shoots should be shortened only a few inches. If severely trimmed they will not blossom until another season's growth has been produced. Hardy.

2-3 ft.; 50c each; ten.....\$4.50

3-4 ft.; 60c each; ten..... 5.50

ROSA RUGOSA

A Japanese variety that forms a strong, sturdy bush 4 to 5 feet high. The foliage is dark glossy green, impervious to the attacks of insects of all kinds. Makes a fine background for low shrubbery; also makes one of the very best shrub hedges. The flowers are single borne in clusters and followed by large, red seed balls. Is very attractive and should be more largely used in landscape work. Perfectly hardy.

RUBRA. Single: rosy crimson, succeeded by large, brilliant berries of much beauty, which persist all through the Autumn and early Winter months.

ALBA. Single, pure white, having five petals and highly scented.

2-3 feet; 45c each; ten.....\$4.00

3-4 ft.; 50c each; ten..... 4.50

HYBRID ROSA RUGOSA

This valuable class of Roses is the result of crossing the Hardy Rosa Rugosa and our common garden Roses. This cross has given us varieties that will stand our Winter without protection, and give an abundance of bloom during the entire Summer.

AMELIA GRAVEREAUX. A splendid new variety with good Rugosa foliage. The blossom is a rich dark red without a tinge of purple. Very double.

BLANC DOUBLE DE COUBERT. Very large, pure white, semi-double and borne in clusters, very fragrant. The bush is a strong, sturdy grower, has the Rugosa foliage, and produces an abundance of bloom. Flowers are nearly 5 inches in diameter, and from five to ten in a cluster. Produced freely and lasting well. Perfectly hardy.

CONRAD F. MEYER. Color silvery rose, fragrant, large, very double, and blooms all Summer. The foliage does not show so much of the Rugosa type as Blanc de Coubert. Claimed to be not quite as hardy as some, but has stood four Winters on our grounds without protection, and came through in perfect condition. We consider it the best of its color.

F. J. GROOTENDORST. A new Hybrid Rugosa. (Rosa rugosa rubra; Crimson Baby Rambler). True Rugosa foliage; blooms bright crimson, in clusters, produced from early Spring to frost; strong but compact, dwarfish grower. Particularly suitable for hedging and mass planting.

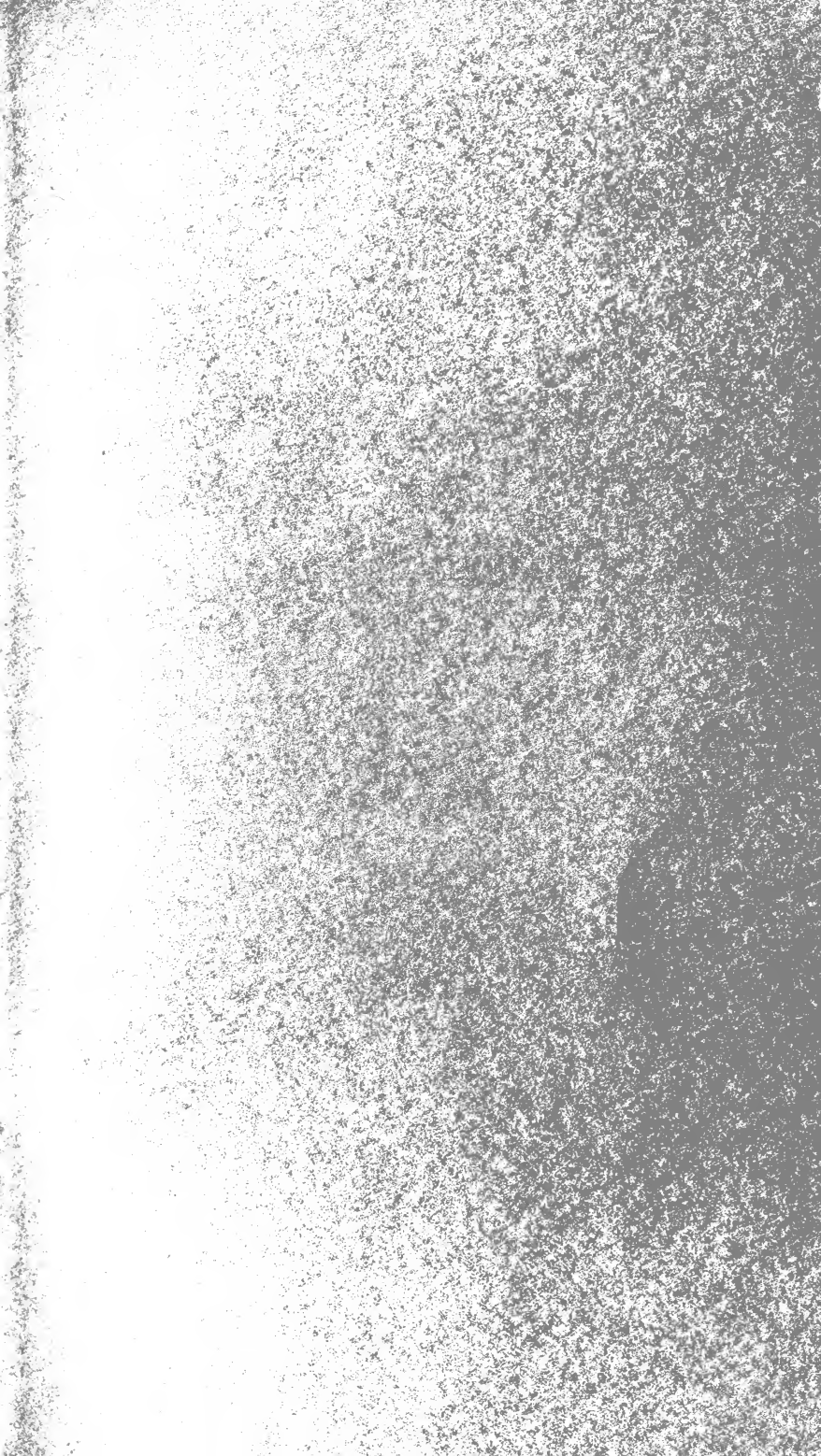
HANSA. Deep violet-red, double. Buds are borne in clusters and nearly all open at once. Has the true Rugosa foliage, and is one of the most valuable Roses we have. It is absolutely hardy.

NOVA ZEMBLA. A light flesh color; a good grower; a fine variety where this color is desired. Flow is very large and sweet scented.

2-3 ft., extra, each 75 cents; ten.....			\$6.50
	Each 10	100	
ROSA BLANDA (Meadow Rose). 2-3 ft...	.55	4.50	36.00
HUMILIS (Pasture Rose). 2-3 ft.....	.50	4.50	36.00
LUCIDA (VIRGINIANA) (Virginia Rose).			
2-3 ft.....	.50	4.00	36.00
ALBA (White Virginia Rose). 2 ft.....	1.20	9.00	80.00
MULTIFLORA (Japanese Rose). 4-5 ft.....	.60	5.00	45.00
NITIDA (Bristly Rose):			
18-4 in.50	4.50	40.00
2-2½ ft.60	5.00	45.00
PAULSTRIS (CAROLINA) (Swamp Rose).			
2-3 ft.60	5.00	40.00
RUBIGINOSA (Sweetbriar). 3-4 ft.....	.70	6.00	50.00
RUBRIFOLIA (Red Leaf Rose). 3-4 ft...	.70	6.00	50.00
SETIGERA (SINGLE PINK (Prairie Rose):			
2-year, 18x24 in.....	.40	3.50	30.00
3-year, 2-2½ ft.....	.50	4.00	36.00
This is the hardy Illinois Prairie Rose.			
WICHURIANA (Wichurian Rose). 3-year			
3-4 ft.60	5.00	45.00

INDEX

	Page		Page
Achillea	8	Hollyhocks	20
Aconitum Autumnale	8	Hypericum Moserianum	20
Aethionena	3	Iris Germanica	20
Ajuga Reptans	8	Iris Kaempferi	21
Alyssum	3	Iris Sibirica	23
Anchusa	8	Lilies	42
Anemone	8	Lys'machia Numularia	8
Anthemis Montana	9	Lathyrus Latifolius	23
Aquilegia	9	Lavendula Vera	23
Arabis Alpina	3	Liatris Spicata	23
Arabis Alpina	9	Linum Perenne	23
Artemisia Lactiflora	9	Lupinus	23
Asclepias Tuberosa	9	Lychnis Chalcedonica	23
Aster	9	Monarda Dydima	23
Astilbe	10	Myosotis Scorpiodes	23
Aubrietia Deltoides	11	Nepeta Mussini	5
Auricula	3	Oenothero Missouriensis	24
Arenaria	3	Pachysandra Terminalis	24
Aquilegia	3	Papaver Bractatum	24
Armeria	4	Papaver Nudicaule	6
Aster Alpinus	4	Pen'stemon Barbatus	24
Baptisia Australis	11	Peonies	24
Bocconia Cordata	11	Phalaris Arundinacea Picta	19
Boltonia Asterioides	11	Phlox	25
Campanula	4	Physostegia Grandiflora	27
Campanula	11	Platycodon Grandiflorum	27
Cassia Marilandica	11	Polymonium Coeruleum	27
Centaurea	11	Primula Vulgaris	28
Chrysanthemum Maximum	12	Pyrethrum	27
Cimicifuga Racemosa	12	Riverton Beauty	19
Climbing Plants and Vines	30-31	Riverton Gem	19
Coreopsis Lanceolata	13	Rudbeckia, Laciniata, Golden Glow	28
Delphinium	13	Roses	60-63
Dianthus	15	Rock Plants	3
Dicentra Formosa	16	Salvia Azurae Grandiflora	28
Digitalis Gloxiniaeflora	16	Saponaria	6
Dahlias	32-35	Scabiosa Caucasia	28
Erinus	5	Sedum	6
Echinops Ritro	16	Sedum Acre	28
Erigeron Speciosus Grandiflore	16	Spiraea Filipendula	28
Eryngium Amethystinum	16	Statice	6
Eupatorium Coelestinum	16	Statice Latifolia	28
Evergreens	43-46	Stokesia Cyanae	28
Festuca Glauca	19	Thalictrum Aquilegifolium	28
Funkia	19	Tritoma Uvaria Grandiflora	29
Gaillardia Grandiflora	19	Trees	56-59
Geum Atrosanguineum	19	Trollium Europaeus	29
Gladiolus	36-41	Tunica	7
Grasses	5	Undulata Variegata	19
Grasses	19	Valeriana	7
Gypsophila Paniculata	19	Valeriana Officinalis	29
Hardy Ferns	17	Veronica	29
Hardy Shrubs	47-53	Viola Cornuta	7
Helenium Autumnale Superbum	19	Viola Cornuta G. Werning	29
Hemerocallus Flava	19	Yucca Filamentosa	29
Hemichers	5		
Hibiscus	20		



LANDSCAPE SERVICE

We are equipped to take charge of complete planting of home grounds, large or small. Also subdivisions, parks, etc. Estimate and plans made on request and furnished for a slight charge.

KUEHNE & REINHARDT

Glenview, Illinois
